



## Index - Pressfittings

Adaptorer / Adaptors .....	fra side / from page	98
Adaptorer flange / Adaptor flanges .....	fra side / from page	104
Bøjninger, MF/MF / Elbows, MF/MF .....	fra side / from page	94
Bøjninger, MF/NP / Elbows, MF/MF .....	fra side / from page	95
Bøjninger, NP/NP / Elbows, MF/MF .....	fra side / from page	107
Dækvinkler / Angle adaptors with flange .....	fra side / from page	100
Muffer / Couplings .....	fra side / from page	93
O-ringe / O-rings .....	fra side / from page	109
Overbøjninger / Performed pipebridges .....	fra side / from page	109
Overgangsstykker / Male adaptor .....	fra side / from page	97
Overgangsvinkler / Angle adaptors .....	fra side / from page	99
Pakninger / Flat seals .....	fra side / from page	111
Propper / Plugs .....	fra side / from page	104
Reduktionsstykker / Reducer .....	fra side / from page	96
Rustfrie stålør til brugsvandsinstallation / Stainless water tubes .....	fra side / from page	111
Rørbroer / Pipebridges .....	fra side / from page	109
Skydemuffer / Slip couplings .....	fra side / from page	93
T-stykker / T-pcs. ....	fra side / from page	101
Unioner / Unions .....	fra side / from page	105
Ventil tilslutning / Valves connector .....	fra side / from page	105

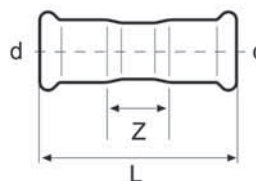
## Muffe N300

Muffe

Coupling

VA/DVGW-godkendt / VA/DVGW-approved

VVS nr.	d mm	L mm	Z mm	Kg/ stk/pc	AISI 316L Varenr. Article no.
034965015	15,0	53	13	0,039	● 019180
034965018	18,0	53	13	0,043	● 019181
034965022	22,0	58	13	0,056	● 019182
034965028	28,0	62	16	0,070	● 019183
034965035	35,0	73	18	0,106	● 019184
034965042	42,0	79	18	0,146	● 019185
034965054	54,0	90	20	0,208	● 019186
034965076	76,1	142	38	0,592	● 019187
034965089	88,9	164	44	0,784	● 019188
034965108	108,0	195	44	1,194	● 019189



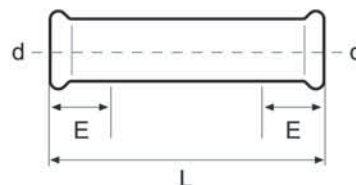
## Muffe N302

Skydemuffe

Slip coupling

VA/DVGW-godkendt / VA/DVGW-approved

VVS nr.	d mm	L mm	E mm	Kg/ stk/pc	AISI 316L Varenr. Article no.
034966015	15,0	74	24	0,051	● 019190
034966018	18,0	78	25	0,064	● 019191
034966022	22,0	82	27	0,081	● 019192
034966028	28,0	90	28	0,112	● 019193
034966035	35,0	99	31	0,152	● 019194
034966042	42,0	114	35	0,203	● 019195
034966054	54,0	138	40	0,280	● 019196
034966076	76,1	230	60	1,000	● 019197
034966089	88,9	260	70	1,320	● 019198
034966108	108,0	310	80	2,220	● 019199



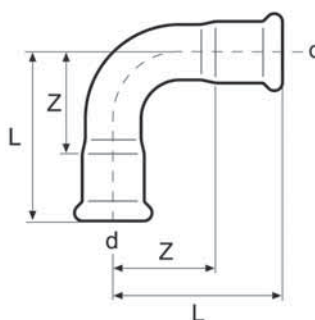
## Bøjning N304

Bøjning 90° - MF/MF

Elbow 90° - MF/MF

VA/DVGW-godkendt / VA/DVGW-approved

VVS nr.	d mm	L mm	Z mm	Kg/ stk/pc	AISI 316L
					Varenr. Article no.
034951015	15,0	48	28	0,057	● 019200
034951018	18,0	54	34	0,071	● 019201
034951022	22,0	60	38	0,096	● 019202
034951028	28,0	72	49	0,138	● 019203
034951035	35,0	88	62	0,206	● 019204
034951042	42,0	115	85	0,315	● 019205
034951054	54,0	143	108	0,479	● 019206
034951076	76,1	152	100	0,962	● 019207
034951089	88,9	175	115	1,295	● 019208
034951108	108,0	213	137	1,926	● 019209



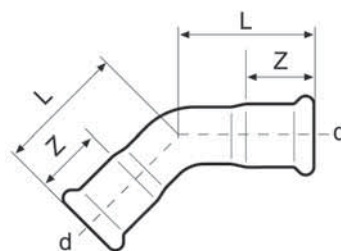
## Bøjning N306

Bøjning 45° - MF/MF

Elbow 45° - MF/MF

VA/DVGW-godkendt / VA/DVGW-approved

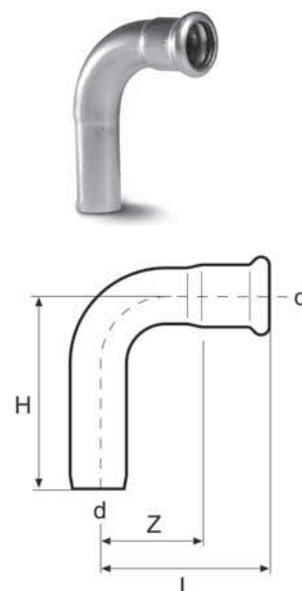
VVS nr.	d mm	L mm	Z mm	Kg/ stk/pc	AISI 316L
					Varenr. Article no.
034953015	15,0	36	17	0,049	● 019210
034953018	18,0	37	17	0,056	● 019211
034953022	22,0	43	21	0,086	● 019212
034953028	28,0	50	27	0,117	● 019213
034953035	35,0	58	32	0,161	● 019214
034953042	42,0	78	42	0,247	● 019215
034953054	54,0	86	50	0,342	● 019216
034953076	76,1	99	47	0,763	● 019217
034953089	88,9	113	53	1,019	● 019218
034953108	108,0	139	64	1,560	● 019219



**Bøjning N308**  
Bøjning 90° - MF/NP  
Elbow 90° - MF/NP

VA/DVGW-godkendt / VA/DVGW-approved

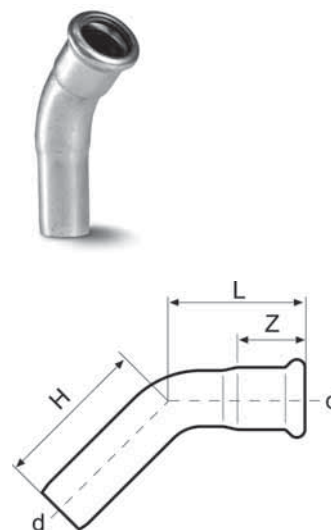
VVS nr.	d mm	L mm	H mm	Z mm	Kg/ stk/pc	AISI 316L Varenr. Article no.
034950015	15,0	48	64	27,0	0,058	● 019220
034950018	18,0	54	70	34,0	0,077	● 019221
034950022	22,0	60	70	38,0	0,092	● 019222
034950028	28,0	72	78	49,0	0,152	● 019223
034950035	35,0	88	94	60,0	0,209	● 019224
034950042	42,0	115	121	85,0	0,306	● 019225
034950054	54,0	143	150	108,0	0,498	● 019226
034950076	76,1	235	250	183,0	0,979	● 019227
034950089	88,9	277	294	217,0	1,302	● 019228
034950108	108,0	344	363	268,0	1,998	● 019229



**Bøjning N310**  
Bøjning 45° - MF/NP  
Elbow 45° - MF/NP

VA/DVGW-godkendt / VA/DVGW-approved

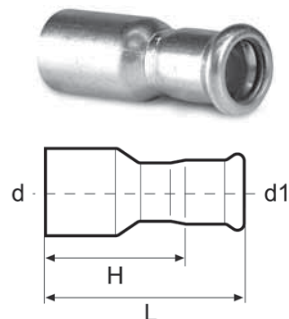
VVS nr.	d mm	L mm	H mm	Z mm	Kg/ stk/pc	AISI 316L Varenr. Article no.
034952015	15,0	36	46	17,0	0,040	● 019230
034952018	18,0	37	48	17,0	0,057	● 019231
034952022	22,0	43	51	21,0	0,084	● 019232
034952028	28,0	50	57	27,0	0,117	● 019233
034952035	35,0	58	64	32,0	0,154	● 019234
034952042	42,0	78	82	42,0	0,233	● 019235
034952054	54,0	86	100	50,0	0,397	● 019236
034952076	76,1	120	136	68,0	0,766	● 019237
034952089	88,9	135	153	75,0	1,000	● 019238
034952108	108,0	160	179	84,0	1,520	● 019239



**Reduktionsstykke N312**  
*Reduktionsstykke -MF/NP*  
*Reducer -MF/NP*

*VA/DVGW-godkendt / VA/DVGW-approved*

VVS nr.	d - d1 mm	L mm	H mm	Kg/ stk/pc	AISI 316L Varenr. Article no.
034974222	18-15	57	38	0,039	● 019240
034974263	22-15	60	41	0,045	● 019241
034974272	22-18	60	40	0,046	● 019242
034974324	28-15	73	54	0,057	● 019243
034974329	28-18	73	53	0,062	● 019244
034974339	28-22	68	46	0,069	● 019245
034974365	35-15	81	62	0,107	● 019246
034974366	35-18	71	51	0,109	● 019247
034974371	35-22	91	69	0,095	● 019248
034974382	35-28	75	52	0,087	● 019249
034974410	42-15	90	71	0,146	● 019250
034974411	42-18	90	70	0,152	● 019251
034974414	42-22	127	105	0,177	● 019252
034974417	42-28	100	77	0,138	● 019253
034974420	42-35	79	53	0,186	● 019254
034974433	54-15	115	96	0,224	● 019255
034974434	54-18	118	98	0,232	● 019256
034974435	54-22	125	103	0,230	● 019257
034974437	54-28	110	87	0,242	● 019258
034974440	54-35	127	101	0,224	● 019259
034974445	54-42	100	70	0,189	● 019260
034974616	76,1-54	147	112	0,454	● 031115
034974644	88,9-54	163	128	0,591	● 031196
034974648	88,9-76,1	160	108	0,660	● 031197
034974667	108-54	172	137	0,866	● 031198
034974676	108-76,1	184	132	0,948	● 031199
034974679	108-88,9	204	144	0,962	● 031200



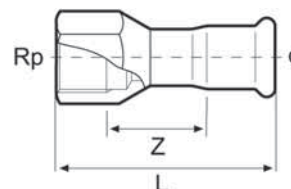
### Overgangsstykke N314

Overgangsstykke - MF/indvendig gevind

Female adaptor - MF/inside thread

VA/DVGW-godkendt / VA/DVGW-approved

VVS nr.	d -Rp mm	L mm	Z mm	Kg/ stk/pc	AISI 316L Varenr. Article no.
034968015	15-Rp½	53	19	0,053	● 019261
034968176	15-Rp¾	67	32	0,079	● 019262
034968222	18-Rp½	51	16	0,051	● 019263
034968232	18-Rp¾	57	21	0,077	● 019264
034968263	22-Rp½	52	15	0,073	● 019265
034968022	22-Rp¾	56	18	0,077	● 019266
034968291	22-Rp1	71	30	0,162	● 019267
034968339	28-Rp¾	73	34	0,105	● 019268
034968028	28-Rp1	61	19	0,104	● 019269
034968354	28-Rp1¼	80	36	0,174	● 019270
034968382	35-Rp1	81	36	0,190	● 019271
034968035	35-Rp1¼	71	24	0,176	● 019272
034968390	35-Rp1½	83	36	0,260	● 019273
034968420	42-Rp1¼	94	43	0,226	● 019274
034968042	42-Rp1½	73	22	0,257	● 019275
034968433	54-Rp1½	104	48	0,378	● 019276
	54-Rp2	85	24	0,351	● 019277



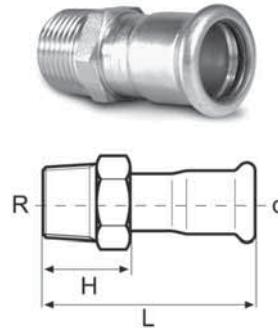
## Overgangsstykke N316

Overgangsstykke - MF/udvendig gevind

Male adaptor - MF/outside thread

VA/DVGW-godkendt / VA/DVGW-approved

VVS nr.	d - R mm	L mm	H mm	Kg/ stk/pc	AISI 316L	Varenr. Article no.
034967015	15-R½	52	33	0,052	●	019278
034967176	15-R¾	64	45	0,069	●	019279
034967222	18-R½	52	32	0,053	●	019280
034967232	18-R¾	55	35	0,064	●	019281
034967263	22-R½	67	45	0,070	●	019283
034967022	22-R¾	57	35	0,074	●	019282
03496729	22-R1	72	50	0,120	●	019284
034967339	28-R¾	75	52	0,101	●	019286
034967028	28-R1	62	39	0,115	●	019285
034967354	28-R1¼	81	58	0,163	●	019287
034967382	35-R1	83	57	0,148	●	019288
034967035	35-R1¼	69	43	0,163	●	019289
034967390	35-R1½	84	58	0,198	●	019290
034967420	42-R1¼	94	64	0,212	●	019291
034967042	42-R1½	74	44	0,253	●	019292
034967433	54-R1½	105	70	0,271	●	019293
034967054	54-R2	86	51	0,312	●	019294
034967076	76,1-R 2½	123	71	0,808	●	031967
034967089	88,9-R 3	137	77	1,152	●	031968



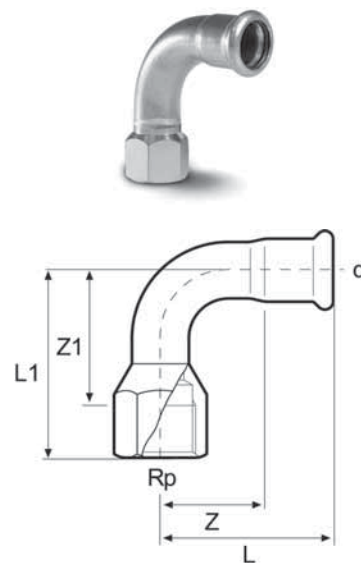
## Adaptor N318

Adaptor 90° - MF/indvendig gevind

Male threaded adaptor 90° - MF/inside thread

VA/DVGW-godkendt / VA/DVGW-approved

VVS nr.	d-Rp mm	L mm	L1 mm	Z mm	Kg/ stk/pc	AISI 316L	Varenr. Article no.
034957015	15-Rp½	48	57	29	0,077	●	019295
034957222	18-Rp½	54	59	34	0,098	●	019296
034957022	22-Rp¾	60	72	38	0,146	●	019297
034957028	28-Rp1	72	80	49	0,227	●	019298
034957035	35-Rp1¼	88	94	62	0,275	●	019299



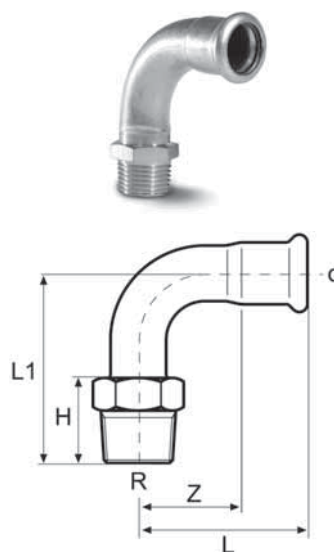
**Adaptor N320**

**Adaptor 90 ° - MF/udvendig gevind**

*Male threaded adaptor 90 ° - MF/outside thread*

*VA/DVGW-godkendt / VA/DVGW-approved*

VWS nr.	d-R mm	L mm	H mm	Z mm	Kg/ stk/pc	AISI 316L	Varenr. Article no.
034955015	15-R½	48	57	28	0,077	●	019300
034955222	18-R½	54	60	34	0,089	●	019301
034955022	22-R¾	60	69	38	0,115	●	019302
034955028	28-R1	72	81	49	0,181	●	019303
034955035	35-R1¼	88	91	62	0,255	●	019304
034955042	42-R1½	115	114	85	0,359	●	019305
034955054	54-R2	143	143	108	0,587	●	019306



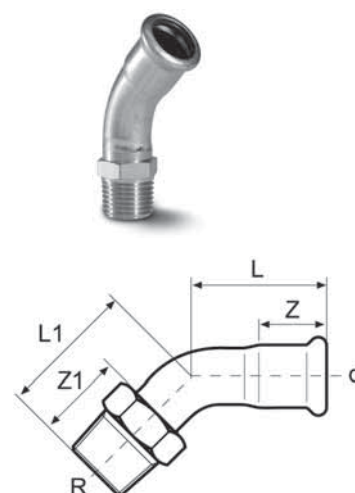
**Adaptor N322**

**Adaptor 45 ° - MF/udvendig gevind**

*Male threaded adaptor 45 ° - MF/outside thread*

*VA/DVGW-godkendt / VA/DVGW-approved*

VWS nr.	d-R mm	L mm	H mm	Z mm	Kg/ stk/pc	AISI 316L	Varenr. Article no.
034956015	15-R ½	36	38	17	0,065	●	019307
034956222	18-R ½	37	45	17	0,071	●	019308
034956022	22-R ¾	43	49	21	0,101	●	019309



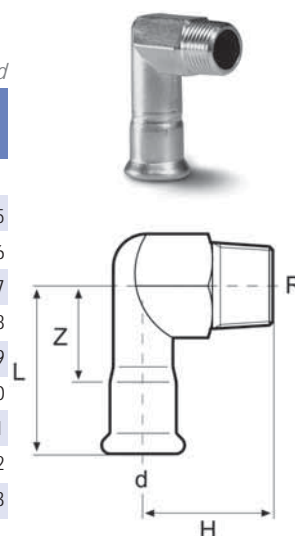
**Overgangsvinkel N324**

**Overgangsvinkel 90 ° - MF/udvendig gevind**

*Male angle adaptor 90 ° - MF/outside thread*

*VA/DVGW-godkendt / VA/DVGW-approved*

VWS nr.	d-R mm	L mm	H mm	Z mm	Kg/ stk/pc	AISI 316L	Varenr. Article no.
034981015	15-R½	56	37	37	0,088	●	019355
034981176	15-R¾	65	39	46	0,141	●	019356
034981222	18-R½	56	37	36	0,098	●	019357
034981232	18-R¾	68	39	48	0,149	●	019358
034981022	22-R¾	59	39	37	0,143	●	019359
034981028	28-R1	65	44	42	0,239	●	019360
034981035	35-R1¼	71	49	45	0,374	●	019361
034981042	42-R1½	80	54	50	0,422	●	019362
034981054	54-R2	90	60	55	0,719	●	019363



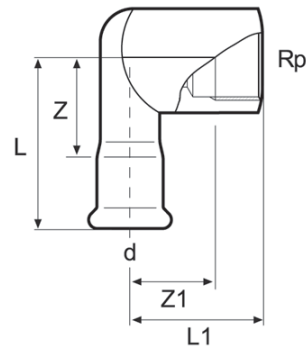
## Overgangsvinkel N326

Overgangsvinkel 90° - MF/indvendig gevind

Female angle adaptor 90° - MF/inside thread

VA/DVGW-godkendt / VA/DVGW-approved

VVS nr.	d-Rp mm	L mm	L1 mm	Z mm	Z1 mm	Kg/ stk/pc	AISI 316L	Varenr. Article no.
034982015	15-Rp½	56	37	37	22	0,120	●	019364
034982222	18-Rp½	56	39	34	24	0,117	●	019365
034982022	22-Rp¾	56	46	34	27	0,180	●	019366
034982028	28-Rp1	63	54	40	35	0,335	●	019367
034982035	35-Rp1¼	72	63	46	42	0,421	●	019368



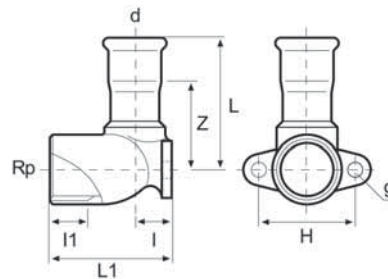
## Dækvinkel N328

Dækvinkel 90° - MF/indvendig gevind

Female angle adaptor with flange 90° - MF/inside thread

VA/DVGW-godkendt / VA/DVGW-approved

VVS nr.	d-Rp mm	L mm	L1 mm	Z mm	I mm	I1 mm	H mm	g mm	Kg/ stk/pc	AISI 316L	Varenr. Article no.
034959015	15-G½	49	43	28	11	14	34	5	0,102	●	019369
034959222	18-G½	49	43	27	11	14	34	5	0,097	●	019370
034959022	22-G¾	53	51	30	14	15	40	6	0,144	●	019371

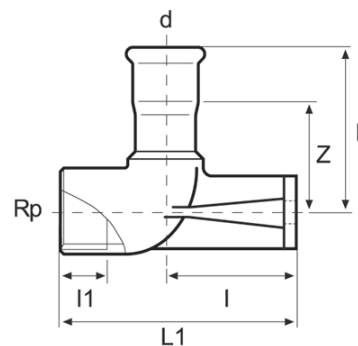


Dækvinkel 90° - MF/indvendig gevind, lang vægplade

Female angle adaptor with flange 90° - MF/inside thread

VA/DVGW-godkendt / VA/DVGW-approved

VVS nr.	d-Rp mm	L mm	I mm	L1 mm	Z mm	Z1 mm	Kg/ stk/pc	AISI 316L	Varenr. Article no.
	15-G½	46	35	65	27	14	0,156	▶	824000
	18-G½	46	35	65	27		0,142	▶	824000
	22-G¾	51	31	65	29	15	0,172	▶	824000



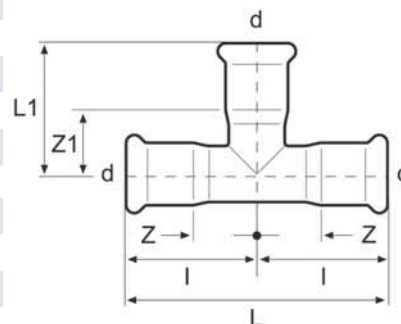
**T-stykke N332**

T-stykke

Equal tee

VA/DVGW-godkendt / VA/DVGW-approved

VWS nr.	d mm	L mm	L1 mm	Z mm	Z1 mm	I mm	Kg/ stk/pc	AISI 316L	Varenr. Article no.
034970015	15,0	74	34	18	15	37	0,067	● 019310	
034970018	18,0	78	39	20	19	39	0,080	● 019311	
034970022	22,0	83	40	22	18	42	0,106	● 019312	
034970028	28,0	92	47	23	24	46	0,140	● 019313	
034970035	35,0	101	54	25	28	51	0,187	● 019314	
034970042	42,0	118	60	29	30	59	0,270	● 019315	
034970054	54,0	142	71	36	36	71	0,380	● 019316	
034970076	76,1	230	120	52	68	115	1,170	● 031114	
034970089	88,9	260	128	60	68	130	1,600	● 031201	
034970108	108,0	310	153	76	77	155	2,319	● 031202	



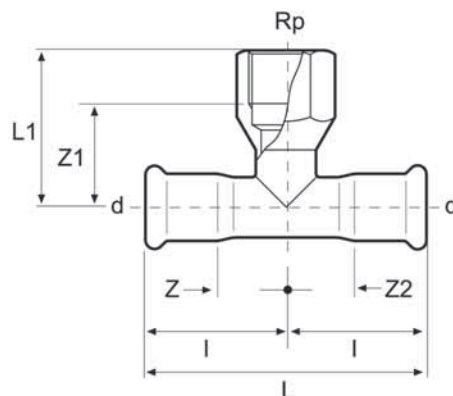
## T-stykke N 334

T-stykke -MF/indvendig gevind

T-pcs., threaded branche

VA/DVGW-godkendt / VA/DVGW-approved

VVS nr. mm	d-Rp	L mm	L1 mm	Z mm	Z1 mm	I mm	Kg/ stk/pc	AISI 316L	Varenr. Article no.
034972015	15-Rp½-15	74	37	18	22	37	0,084	●	19338
034972222	18-Rp½-18	78	38	19	23	39	0,093	●	19339
034972232	18-Rp¾-18	78	44	19	28	39	0,129	●	19340
034972263	22-Rp½-22	83	41	19	27	41	0,115	●	19341
034972022	22-Rp¾-22	83	41	19	27	41	0,125	●	19342
034972324	28-Rp½-28	92	44	23	29	46	0,143	●	19343
034972339	28-Rp¾-28	92	45	23	29	46	0,173	●	19344
034972028	28-Rp1-28	92	48	23	29	46	0,229	●	19345
034972365	35-Rp½-35	101	47	24	32	50	0,171	●	19346
034972371	35-Rp¾-35	101	48	24	35	50	0,192	●	19347
034972035	35-Rp1¼-35	101	56	24	35	50	0,258	●	19348
034972410	42-Rp½-42	118	47	29	32	59	0,250	●	19349
034972414	42-Rp¾-42	118	51	29	35	59	0,255	●	19350
034972042	42-Rp1½-42	118	59	29	38	59	0,396	●	19351
034972433	54-Rp½-54	142	54	36	39	71	0,343	●	19352
034972435	54-Rp¾-54	142	58	36	42	71	0,363	●	19353
034972054	54-Rp2-54	142	70	36	44	71	0,571	●	19354
034972608	76,1-Rp¾-76,1	230	78	62	62	115	0,950	●	31221
034972616	76,1-Rp2-76,1	230	91	62	65	115	1,139	●	31222
034972642	88,9-Rp¾-88,9	260	75	70	59	130		●	31223
034972644	88,9-Rp2-88,9	260	89	70	63	130		●	31224
034972663	108-Rp¾-108	310	85	79	69	155	1,830	●	31225
034972667	108-Rp2-108	310	98	79	72	155		●	31226



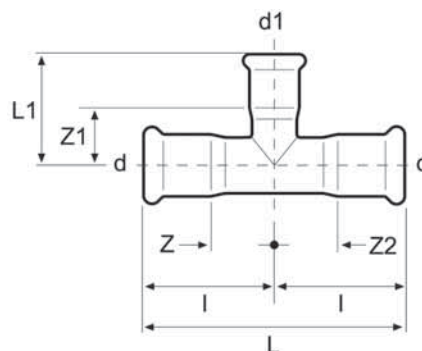
### T-stykke N336

T-stykke med reducedret gren

T-pcs., with reduced branche

VA/DVGW-godkendt / VA/DVGW-approved

VVS nr.	d-d1-d mm	L mm	L1 mm	Z mm	Z1 mm	I mm	Kg/ stk/pc	AISI 316L Varenr. Article no.
034970222	18-15-18	78	35	19	16	39	0,078	● 19317
034970263	22-15-22	83	36	19	17	41	0,041	● 19318
034970272	22-18-22	83	38	19	18	41	0,141	● 19319
034970324	28-15-28	92	42	23	23	46	0,146	● 19320
034970329	28-18-28	92	42	23	22	46	0,146	● 19321
034970339	28-22-28	92	45	23	22	46	0,146	● 19322
034970365	35-15-35	101	43	24	22	50	0,050	● 19323
034970366	35-18-35	101	44	24	22	50	0,050	● 19324
034970371	35-22-35	101	47	24	25	50	0,050	● 19325
034970382	35-28-35	101	49	24	26	50	0,050	● 19326
034970410	42-15-42	118	47	29	28	59	0,059	● 19327
034970411	42-18-42	118	48	29	28	59	0,059	● 19328
034970414	42-22-42	118	50	29	28	59	0,059	● 19329
034970417	42-28-42	118	53	29	30	59	0,059	● 19330
034970420	42-35-42	118	57	29	31	59	0,059	● 19331
034970433	54-15-54	230	58	36	39	71	0,363	● 19332
034970435	54-15-54	230	56	36	36	71	0,071	● 19333
034970436	54-22-54	230	56	36	34	71	0,071	● 19334
034970437	54-28-54	230	59	36	36	71	0,071	● 19335
034970440	54-35-54	230	64	36	38	71	0,071	● 19336
034970445	54-42-54	260	68	36	38	71	0,071	● 19337
034970608	76,1-22-76,1	260	120	62	98	115	0,115	● 19337
034970610	76,1-28-76,1	260	120	62	97	115	0,115	● 31204
034970612	76,1-35-76,1	260	120	62	94	115	0,115	● 31205
034670614	76,1-42-76,1	260	120	62	90	115	0,115	● 31206
034970616	76,1-54-76,1	260	120	62	85	115	0,115	● 31207
034970642	88,9-22-88,9	260	128	70	106	130	0,130	▶ 31208
034970638	88,9-28-88,9	260	128	70	105	130	0,130	● 31209
034970639	88,9-35-88,9	260	128	70	102	130	0,130	● 31210
034970643	88,9-42-88,9	260	128	70	98	130	0,130	● 31211
034970644	88,9-54-88,9	260	128	70	93	130	0,130	● 31212
034970648	88,9-76,1-88,9	260	128	70	70	130	0,130	● 31213
034970663	108-22-108	310	153	79	131	155	0,155	● 31214
034970664	108-28-108	310	153	79	130	155	0,155	▶ 31215
034970665	108-35-108	310	153	79	127	155	0,155	● 31216
034970666	108-42-108	310	153	79	123	155	0,155	● 31217
034970667	108-54-108	310	153	79	118	155	0,155	● 31218
034970676	108-76,1-108	310	153	79	100	155	0,155	● 31219
034970679	108-88,9-108	310	153	79	93	155	0,155	▶ 31220

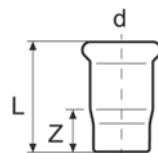


## Prop N338

Prop  
Plug

VA/DVGW-godkendt / VA/DVGW-approved

VVS nr.	d mm	L mm	Z mm	Kg/ stk/pc	AISI 316L Varenr. Article no.
034988015	15,0	37	18	0,027	● 019414
034988018	18,0	39	19	0,032	● 019415
034988022	22,0	41	19	0,045	● 019416
034988028	28,0	46	23	0,062	● 019417
034988035	35,0	51	25	0,084	● 019418
034988042	42,0	60	30	0,123	● 019419
034988054	54,0	71	36	0,185	● 019420
034988076	76,1	112	60	0,420	▶ 031230
034988089	88,9	127	67	0,543	● 031231
034988108	108,0	152	76	0,822	▶ 031232

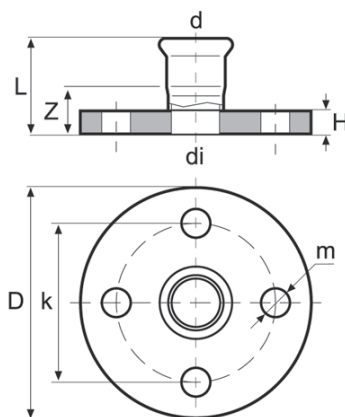


## Adaptor N340

Adaptor flange  
Adaptor flange

VA/DVGW-godkendt / VA/DVGW-approved

VVS nr.	d mm	D mm	di mm	L mm	H mm	m mm	k mm	Z mm	Kg/ stk/pc	AISI 316L Varenr. Article no.
034980015	15,0	95	14	54	11	14	65	35	0,580	▶ 019407
034980018	18,0	95	17	60	11	14	65	40	0,579	● 019408
034980022	22,0	105	21	64	12	14	75	42	0,790	▶ 019409
034980028	28,0	115	27	71	14	14	85	48	1,099	● 019410
034980035	35,0	114	32	79	15	14	100	53	1,710	● 019411
034980042	42,0	150	39	91	16	14	110	61	2,095	● 019412
034980054	54,0	165	51	112	18	14	125	77	2,834	● 019413
034980076	76,1	185	72	126	18	14	145	74	3,546	● 031227
034980089	88,9	200	85	143	20	14	160	83	4,346	● 031228
034980108	108,0	220	104	168	20	14	180	92	5,219	● 031229



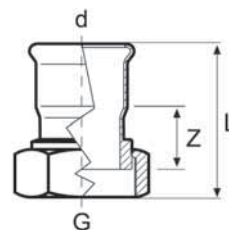
## Ventil tilslutning N342

Ventil tilslutning med omløber møtrik

Valve connector with swivel nut

VA/DVGW-godkendt / VA/DVGW-approved

WVS nr.	G-d	materiale material	L mm	Z mm	Kg/ stk/pc	AISI 316L	Varenr. Article no.
034984015	G¾-15	Messing/Brass	51	24	0,074	●	019421
034984232	G¾-18	Messing/Brass	51	23	0,076	●	019422
034984291	G1-22	Messing/Brass	51	21	0,106	●	019423
034984180	G1¼-15	Messing/Brass	51	24	0,183	▶	019424
034984354	G1¼-28	Messing/Brass	56	25	0,165	●	019425
034984390	G1½-35	Messing/Brass	64	30	0,260	●	019426
034984426	G1¾-42	Messing/Brass	69	31	0,382	●	019427
034984458	G2 3/8-54	Messing/Brass	78	34	0,402	●	019428
034986176	G¾-15	Rustfrit/Stainless	51	23	0,402	▶	019429
034986291	G1-22	Rustfrit/Stainless	51	19	0,402	●	019430
(ISO 228)							



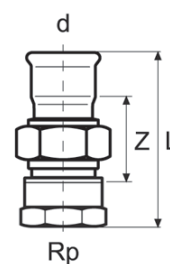
## Union N344

Union-MF/indvendig gevind

Female straight union with a swivel nut

VA/DVGW-godkendt / VA/DVGW-approved

WVS nr.	d-Rp mm	L mm	Z mm	Kg/ stk/pc	AISI 316L	Varenr. Article no.
034991015	15-Rp½	73	43	0,145	▶	031950
034991176	15-Rp¾	75	44	0,182	▶	031951
034991222	18-Rp½	72	41	0,145	▶	031952
034991232	18-Rp¾	74	42	0,182	▶	031953
034991022	22-Rp¾	76	42	0,212	▶	031954
034991291	22-Rp1	79	43	0,242	▶	031955
034991028	28-Rp1	83	46	0,398	▶	031956
034991035	35-Rp1¼	93	50	0,515	▶	031957
034991042	42-Rp1½	98	51	0,620	▶	031958
034991054	54-Rp2	112	56	0,878	▶	031959



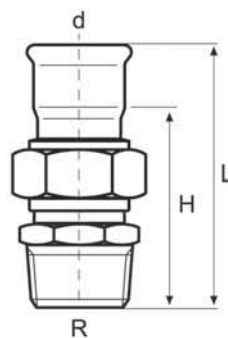
## Union N346

Union - MF/udvendig gevind

Male straight union with a swivel nut

VA/DVGW-godkendt / VA/DVGW-approved

VVS nr.	d-R mm	L mm	H mm	Kg/ stk/pc	AISI 316L	Varenr. Article no.
034990015	15-R½	77	58	0,153	●	031939
034990176	15-R¾	79	60	0,169	▶	031940
034990222	18-R½	77	58	0,150	●	031941
034990232	18-R¾	79	60	0,169	●	031942
034990263	22-R½	80	58	0,239	●	031943
034990022	22-R¾	82	60	0,222	●	031944
034990291	22-R1	86	64	0,256	●	031945
034990028	28-R1	90	67	0,394	●	031946
034990035	35-R1¼	100	74	0,544	●	031947
034990042	42-R1½	108	78	0,677	●	031948
034990054	54-R2	121	86	0,939	●	031949



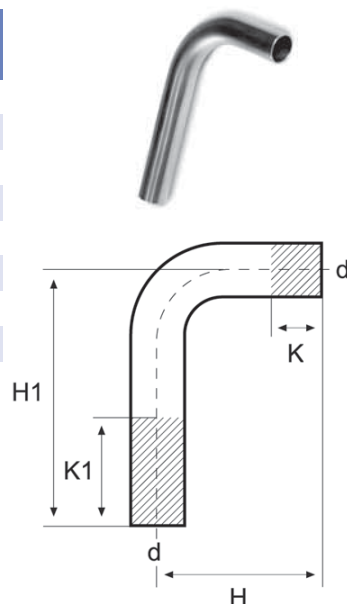
### Bøjning N350

Bøjning 90° - NP/NP

Elbow 90°, plain ends - NP/NP

VA/DVGW-godkendt / VA/DVGW-approved

VVS nr.	d mm	H1 mm	H mm	K1 mm	K mm	Kg/ stk/pc	AISI 316L Varenr. Article no.
034960015	15,0	120	70	22	72	0,058	● 019372
034960018	18,0	120	70	17	67	0,071	● 019373
034960022	22,0	120	70	9	59	0,102	● 019374
034960028	28,0	125	97	7	47	0,153	● 019375
034960035	35,0	200	120	30	110	0,364	● 019376
034960042	42,0	250	150	44	144	0,565	● 019377
034960054	54,0	300	200	65	165	0,868	● 019378



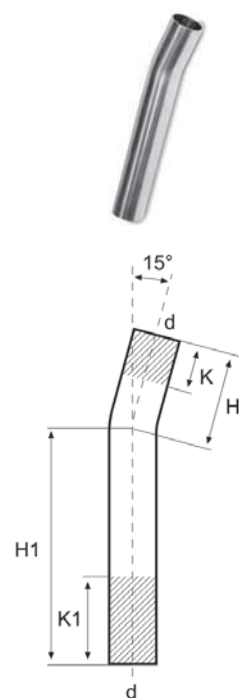
### Bøjning N352

Bøjning 15° - NP/NP

Elbow 15°, plain ends - NP/NP

VA/DVGW-godkendt / VA/DVGW-approved

VVS nr.	d mm	H1 mm	H mm	K1 mm	K mm	Kg/ stk/pc	AISI 316L Varenr. Article no.
034964028	28,0	136	45	7	47	0,146	● 019379
034964035	35,0	228	68	30	110	0,376	● 019380
034964042	42,0	280	89	44	144	0,563	● 019381
034964054	54,0	332	126	65	165	0,872	● 019382



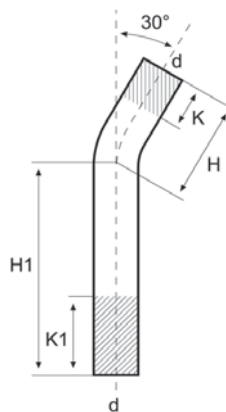
## Bøjning N354

Bøjning 30° - NP/NP

Elbow 30° - NP/NP

VA/DVGW-godkendt / VA/DVGW-approved

VVS nr.	d mm	H1 mm	H mm	K1 mm	K mm	Kg/ stk/pc	AISI 316L	Varenr. Articleno.
034963028	28,0	130	54	7	47	0,147	● 019383	
034963035	35,0	218	80	30	110	0,381	● 019384	
034963042	42,0	268	105	44	144	0,567	● 019385	
034963054	54,0	326	133	65	165	0,869	● 019386	



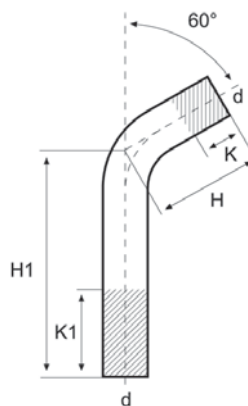
## Bøjning N358

Bøjning 60° - NP/NP

Elbow 60°, plain ends - NP/NP

VA/DVGW-godkendt / VA/DVGW-approved

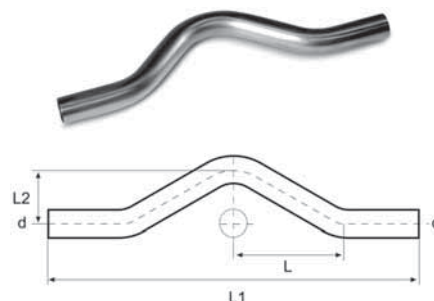
VVS nr.	d mm	H1 mm	H mm	K1 mm	K mm	Kg/ stk/pc	AISI 316L	Varenr. Articleno.
034961028	28,0	121	66	7	47	0,143	● 019387	
034961035	35,0	203	97	30	110	0,374	● 019388	
034961042	42,0	256	120	44	144	0,590	● 019389	
034961054	54,0	306	162	65	165	0,862	● 019390	



**Rørbro N362**  
Rørbro - NP/NP  
Pipebridge - NP/NP

VA/DVGW-godkendt / VA/DVGW-approved

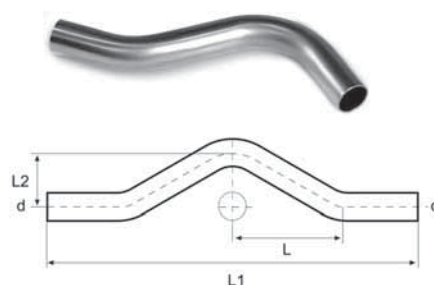
VWS nr.	d mm	L1 mm	L2 mm	L mm	Kg/ stk/pc	AISI 316L	Varenr. Article no.
034977015	15	202	37	64	0,073	●	019399
034977018	18	237	42	66	0,066	●	019400
034977022	22	233	42	58	0,058	●	019401
034977028	28	301	50	102	0,102	●	019402



**Overbøjning N364**  
Overbøjning - NP/NP  
Performed pipebridge - NP/NP

VA/DVGW-godkendt / VA/DVGW-approved

VWS nr.	d mm	L1 mm	L2 mm	L mm	Kg/ stk/pc	AISI 316L	Varenr. Article no.
034976015	15	145	37	57	0,054	●	019403
034976018	18	157	40	60	0,074	●	019404
034976022	2	175	52	65	0,117	●	019405
034976028	28	226	65	74	0,205	▶	019406



**O-ring N366**  
O-ring i EPDM - Temp. -20 ° til + 120 °  
O-ring in EPDM - Temp. -20 ° til + 120 °

VA/DVGW-godkendt / VA/DVGW-approved

VWS nr.	Rør dim/Pipe dim mm	E mm	C mm	Gr/ stk/pc	AISI 316L	Varenr. Article no.
034989015	15,0	15,0	2,6	0,3	●	019432
034989018	18,0	18,0	2,6	0,4	●	019433
034989022	22,0	22,0	3,2	0,7	●	019434
034989028	28,0	28,0	3,1	0,8	●	019435
034989035	35,0	35,0	3,1	1,0	●	019436
034989042	42,0	42,0	4,1	2,2	●	019437
034989054	54,0	54,0	4,1	2,8	●	019438
034989076	76,1	76,8	8,0		●	031233
034989089	88,9	89,3	8,2		●	031234
034989108	108,0	108,6	11,0		▶	031235



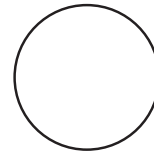
## O-ring N368

O-ring i NITRIL/NBR - Temp. -20 ° til + 100 °

O-ring in NITRIL/NBR - Temp. -20 ° til + 100 °

VA/DVGW-godkendt / VA/DVGW-approved

VVS nr.	Rør dim/Pipe dim mm	E mm	C mm	Gr/ stk/pc	AISI 316L	Varenr. Article no.
034989215	15,0	15,0	2,6	0,3	●	031275
034989218	18,0	18,0	2,6	0,4	●	031276
034989222	22,0	22,0	3,2	0,7	●	031277
034989228	28,0	28,0	3,1	0,8	●	031278
034989235	35,0	35,0	3,1	1,0	●	031279
034989242	42,0	42,0	4,1	2,2	●	031280
034989254	54,0	54,0	4,1	2,8	●	031281
034989276	76,1	76,8	8,0		●	031282
034989289	88,9	89,3	8,2		●	031283
034989208	108,0	108,6	11,0		●	031284



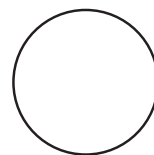
## O-ring N370

O-ring i VITON/FKM - Temp. -20 ° til + 150 °

O-ring in VITON/FKM - Temp. -20 ° til + 150 °

VA/DVGW-godkendt / VA/DVGW-approved

VVS nr.	Rør dim/Pipe dim mm	E mm	C mm	Gr/ stk/pc	AISI 316L	Varenr. Article no.
034989115	15,0	15,0	2,6	0,3	●	031285
034989118	18,0	18,0	2,6	0,4	●	031286
034989122	22,0	22,0	3,2	0,7	●	031287
034989128	28,0	28,0	3,1	0,8	●	031288
034989135	35,0	35,0	3,1	1,0	●	031289
034989142	42,0	42,0	4,1	2,2	●	031290
034989154	54,0	54,0	4,1	2,8	●	031291
034989176	76,1	76,8	8,0		●	031292
034989189	88,9	89,3	8,2		▶	031293
034989208	108,0	108,6	11,0		●	031294



**Pakning N372**  
*Flade pakning i EPDM*  
*Flat seal in EPDM*

*VA/DVGW-godkendt / VA/DVGW-approved*

VVS nr.	Rør dim/Pipe dim mm	A mm	B mm	C mm	Gr/ stk/pc	AISI 316L	Varenr. Article no.
034989615	15,0	15,0	23,0	2	0,5	●	031960
034989618	18,0	18,0	23,0	2	0,5	●	031961
034989622	22,0	22,5	29,6	2	0,7	●	031962
034989628	28,0	27,0	38,6	2	1,4	●	031963
034989635	35,0	35,0	44,6	2	1,3	●	031964
034989642	42,0	42,0	50,6	2	1,7	●	031965
034989654	54,0	53,5	67,0	2	4,0	●	031966



*Rustfrie stålør til brugsvandsinstallation EN 10312, rørender med propper*  
*Water tubes, EN 10312, plastic plugged tube ends*

*VA/DVGW-godkendt / VA/DVGW-approved*

VVS nr.	Rør dim/Pipe dim mm	Længde/Length mm	Kg/m	AISI 316L	Varenr. Article no.
030624015	15,0 x 1,00	6000	0,350	●	019700
030624018	18,0 x 1,00	6000	0,420	●	019701
030624022	22,0 x 1,20	6000	0,640	●	019702
030624028	28,0 x 1,20	6000	0,820	●	019703
030624035	35,0 x 1,50	6000	1,260	●	019704
030624042	42,0 x 1,50	6000	1,580	●	019705
030624054	54,0 x 1,50	6000	1,972	●	019706
030624076	76,1 x 2,00	6000	3,740	●	019707
030624089	88,9 x 2,00	6000	4,350	●	019708
030624108	108,0 x 2,00	6000	5,340	●	019709