



## Indhold - Svejsefittings / Flanger

### Svejsefittings / Welding fittings

Bøjninger, svejste / Welded elbows . . . . .	fra side / from page	64
Bøjninger, sømløse / Seamless elbows . . . . .	fra side / from page	63
Endebunde / End caps . . . . .	fra side / from page	80
Konusser / Reducers . . . . .	fra side / from page	73
Rørholdere / Pipe supports . . . . .	fra side / from page	69
Svejsekraver / Welding collars. . . . .	fra side / from page	81
T-stykker / T-pcs. . . . .	fra side / from page	76

### Flanger / Flanges

Blindflanger, DIN 2527 / Blind flanges, DIN 2527 . . . . .	fra side / from page	91
Blindflanger, ANSI B16-5 / Blind flanges, ANSI B16-5 . . . . .	fra side / from page	92
Gevindflanger, DIN 2566C / Threaded flange, DIN 2566C . . . . .	fra side / from page	90
Løsflanger, aluminium, DIN 2642 / Loose flanges, aluminum, DIN 2642 . . . . .	fra side / from page	83
Løsflanger, galvaniserede, DIN 2642 / Loose flanges, galvanized, DIN 2642. . . . .	fra side / from page	87
Løsflanger, syrefaste, DIN 2642 / Loose flanges, acid-proof, DIN 2642 . . . . .	fra side / from page	85
Plane flanger, DIN 2576 / Flat flanges, DIN 2576. . . . .	fra side / from page	88
Pressede løsfanger, DIN 2642 / Pressed lap joint flanges, DIN 2642 . . . . .	fra side / from page	86
Svejseflanger, DIN 2633 / Welding flanges, DIN 2633 . . . . .	fra side / from page	88

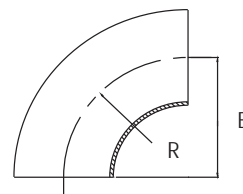
### Bøjning N111

Sæmløs bøjning, 90°, DIN 2605, norm 3 d

Seamless elbow, 90°, DIN 2605, norm 3 d

Cert.: EN 10204/3.1

Dim. mm	B/R mm	Kg/ stk/pc	EN 1.4404 AISI 316L	Varenr. Article no.
13,5 x 2,3	20,0	0,02	●	20000
15,0 x 1,5	27,5	0,02	●	20001
17,2 x 1,6	28,0	0,03	●	20002
17,2 x 2,3	27,5	0,04	●	20003
18,0 x 1,5	22,5	0,03	●	20004
20,0 x 1,5	25,0	0,03	●	20005
21,3 x 1,6	28,0	0,03	▶	20006
21,3 x 2,6	28,0	0,06	●	20007
23,0 x 1,5	25,0	0,04	▶	20008
25,0 x 1,5	27,5	0,04	●	20009
25,0 x 2,0	27,5	0,05	●	20010
26,9 x 1,6	29,0	0,05	▶	20011
26,9 x 2,6	29,0	0,08	●	20012
28,0 x 1,5	32,5	0,06	●	20013
30,0 x 2,0	33,5	0,07	▶	20014
32,0 x 2,0	35,0	0,10	▶	20015
33,7 x 2,0	38,0	0,10	●	20016
33,7 x 3,2	38,0	0,14	●	20017
35,0 x 2,0	45,0	0,12	▶	20018
38,0 x 2,0	45,0	0,13	▶	20019
40,0 x 2,0	45,0	0,16	▶	20020
42,4 x 2,0	48,0	0,16	▶	20021
42,4 x 3,2	48,0	0,23	●	20022
44,5 x 2,0	51,0	0,17	▶	20024
48,3 x 2,0	57,0	0,22	▶	20025
48,3 x 3,2	57,0	0,32	●	20026
50,0 x 2,0	71,0	0,25	▶	20027
51,0 x 2,6	67,5	0,40	●	20028
54,0 x 2,0	70,0	0,34	●	20029
57,0 x 2,5	75,0	0,42	▶	20030
60,3 x 2,6	76,0	0,44	●	20031
60,3 x 3,6	76,0	0,62	●	20032
64,0 x 2,0	82,5	0,43	▶	20033
70,0 x 2,5	92,0	0,53	▶	20034
76,1 x 2,6	95,0	0,77	●	20035
76,1 x 3,6	95,0	1,08	●	20036
88,9 x 2,6	114,0	1,02	▶	20037
88,9 x 4,0	114,0	1,65	●	20038
108,0 x 4,0	142,5	2,20	●	20039
114,3 x 4,5	152,5	3,00	●	20040



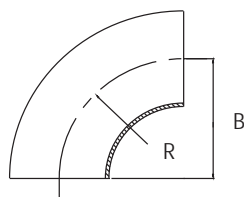
## Bøjning N112

Svejst bøjning, 90°, DIN 2605, norm 3 d, ISO

Welded elbow, 90°, DIN 2605, norm 3 d, ISO

Cert.: EN 10204/3.1

Dim. mm	B/R mm	Kg/ stk/pc	EN 1.4307	EN 1.4404
			Varenr. Article no.	Varenr. Article no.
17,2 x 1,6	27,5	0,03	● 20041	● 20042
17,2 x 2,3	28,0	0,04	▶ 20043	▶ 20044
21,3 x 1,6	28,0	0,03	● 20051	▶ 20052
21,3 x 2,0	28,0	0,04	● 20053	● 20054
21,3 x 2,6	28,0	0,06	▶ 20055	● 20056
26,9 x 1,6	29,0	0,05	● 20063	▶ 20064
26,9 x 2,0	29,0	0,06	● 20065	● 20066
26,9 x 2,6	29,0	0,08	● 20067	● 20068
33,7 x 1,6	38,0	0,08	● 20075	▶ 20076
33,7 x 2,0	38,0	0,10	● 20077	● 20078
33,7 x 3,2	38,0	0,14	● 20079	● 20080
42,4 x 1,6	48,0	0,13	▶ 20091	● 20092
42,4 x 2,0	48,0	0,16	● 20093	● 20094
42,4 x 3,2	48,0	0,23	● 20095	● 20096
48,3 x 1,6	57,0	0,19	▶ 20099	▶ 20100
48,3 x 2,0	57,0	0,22	● 20101	● 20102
48,3 x 3,2	57,0	0,32	● 20103	● 20104
60,3 x 1,6	76,0	0,29	● 20117	▶ 20118
60,3 x 2,0	76,0	0,40	● 20119	● 20120
60,3 x 2,6	76,0	0,50	▶ 20121	▶ 20122
60,3 x 3,6	76,0	0,62	● 20123	▶ 20124
76,1 x 2,0	95,0	0,62	● 20135	● 20136
76,1 x 2,6	95,0	0,70	▶ 20137	● 20138
76,1 x 3,0	95,0	0,80	▶ 20139	▶ 20140
76,1 x 3,6	95,0	1,08	▶ 20141	● 20142
88,9 x 2,0	114,0	0,81	● 20147	● 20148
88,9 x 2,6	114,0	1,00	▶ 20149	▶ 20150
88,9 x 3,0	114,0	1,20	▶ 20151	▶ 20152
88,9 x 4,0	114,0	1,65	▶ 20153	● 20154
101,6 x 2,0	133,0	1,05	● 20155	● 20156
114,3 x 2,0	152,0	1,30	● 20167	● 20168
114,3 x 2,6	152,0	1,70	▶ 20169	▶ 20170
114,3 x 3,0	152,0	2,00	● 20171	● 20172
139,7 x 2,0	190,0	2,07	● 14034	● 14035
139,7 x 2,6	190,0	2,60	▶ 20185	▶ 20186
139,7 x 3,0	190,0	3,10	▶ 20187	▶ 20188
168,3 x 2,0	229,0	3,00	● 14036	● 14037
168,3 x 2,6	229,0	3,70	▶ 20199	▶ 20200
168,3 x 3,0	229,0	4,50	● 20201	● 20202
219,1 x 2,0	305,0	5,20	● 14038	● 14039
219,1 x 2,5	305,0	6,50	▶ 20211	▶ 20212
219,1 x 3,0	305,0	7,80	▶ 32778	● 20213
273,0 x 3,0	381,0	12,00	● 20221	● 20222



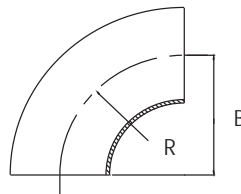
**Bøjning N112**

Svejst bøjning, 90°, DIN 2605, norm 3 d, ISO

Welded elbow, 90°, DIN 2605, norm 3 d, ISO

Cert.: EN 10204/3.1

Dim. mm	B/R mm	Kg/ stk/pc	EN 1.4307 Varenr. Article no.	EN 1.4404 Varenr. Article no.
323,9 x 3,0	457,0	17,00	● 20229	▶ 20230
355,6 x 3,0	533,0	22,00	▶ 20231	● 20232
406,4 x 3,0	609,5	29,00	▶ 20233	● 20234
457,0 x 3,0	650,0	36,80	▶ 21070	



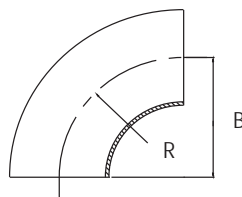
## Bøjning N112

Svejst bøjning, 90°, DIN 2605, DIN

Welded elbow, 90°, DIN 2605, DIN

Cert.: EN 10204/3.1

Dim. mm	B/R mm	Kg/ stk/pc		EN 1.4307	EN 1.4404
				Varenr. Article no.	Varenr. Article no.
18,0 x 1,5	22,5	0,03		● 20045	▶ 20046
20,0 x 1,5	25,0	0,03		● 20047	● 20048
20,0 x 2,0	25,0	0,04		▶ 20049	● 20050
23,0 x 1,5	25,0	0,04		▶ 20057	● 20058
25,0 x 1,5	27,5	0,04		▶ 20059	▶ 20060
25,0 x 2,0	27,5	0,05		● 20061	● 20062
28,0 x 1,5	32,5	0,06		▶ 20069	● 20070
30,0 x 2,0	33,5	0,07		● 20071	● 20072
32,0 x 2,0	35,0	0,12		▶ 20073	▶ 20074
35,0 x 1,5	45,0	0,10	norm 3 d	▶ 20081	● 20082
38,0 x 1,5	45,0	0,11		● 20085	▶ 20086
38,0 x 2,0	45,0	0,13		● 20087	● 20088
40,0 x 2,0	45,0	0,20		● 20089	● 20090
44,5 x 2,0	51,0	0,17		● 20097	● 20098
51,0 x 1,5	67,5	0,21		▶ 20105	▶ 20106
51,0 x 2,0	67,5	0,31		● 20107	▶ 20108
53,0 x 1,5	72,5	0,26		▶ 20109	▶ 20110
54,0 x 2,0	70,0	0,34		● 20111	● 20112
57,0 x 2,0	75,0	0,34	norm 3 d	● 20113	▶ 20114
57,0 x 3,0	75,0	0,48	norm 3 d	▶ 20115	▶ 20116
63,5 x 1,5	82,5	0,31		▶ 20125	▶ 20126
69,0 x 2,0	92,0	0,50		▶ 20129	▶ 20130
70,0 x 2,0	92,0	0,50		● 20131	● 20132
84,0 x 2,0	120,0	0,75	norm 3 d	● 20143	● 20144
86,0 x 3,0	120,0	1,10	norm 3 d	▶ 20145	▶ 20146
104,0 x 2,0	150,0	1,20	norm 3 d	● 20157	● 20158
105,0 x 2,5	150,0	1,51	norm 3 d	▶ 20159	▶ 20160
106,0 x 3,0	150,0	2,10	norm 3 d	▶ 20161	● 13200
108,0 x 2,0	142,5	1,10		● 20163	▶ 20164
108,0 x 4,0	142,5	2,20		▶ 20165	▶ 20166
129,0 x 2,0	188,0	1,90	norm 3 d	● 20173	● 20174
130,0 x 2,5	187,5	2,35	norm 3 d	▶ 20175	▶ 13103
131,0 x 3,0	187,5	2,95	norm 3 d	▶ 20177	● 13201
133,0 x 3,0	187,5	3,12	norm 3 d	▶ 20179	▶ 20180
133,0 x 4,0	187,5	3,62	norm 3 d	▶ 20181	▶ 20182
154,0 x 2,0	225,0	2,75	norm 3 d	● 14026	● 20190
155,0 x 2,5	225,0	3,30	norm 3 d	▶ 20191	▶ 20192
156,0 x 3,0	225,0	4,05	norm 3 d	▶ 20193	▶ 20194
158,0 x 4,0	225,0	4,95	norm 3 d	▶ 20195	▶ 20196
204,0 x 2,0	300,0	4,75	norm 3 d	● 14028	● 14029
205,0 x 2,5	300,0	6,00	norm 3 d	▶ 20205	▶ 20206
206,0 x 3,0	300,0	7,30	norm 3 d	▶ 20207	▶ 20208
254,0 x 2,0	375,0	7,50	norm 3 d	▶ 20215	▶ 20216



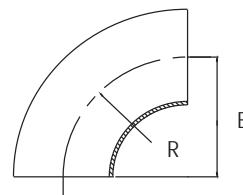
**Bøjning N112**

Svejst bøjning, 90°, DIN 2605, DIN

Welded elbow, 90°, DIN 2605, DIN

Cert.: EN 10204/3.1

Dim. mm	B/R mm	Kg/ stk/pc		EN 1.4307		EN 1.4404	
				Varenr. Article no.	Varenr. Article no.	Varenr. Article no.	Varenr. Article no.
255,0 x 2,5	375,0	9,40	norm 3 d	▶ 20217	▶ 20218		
256,0 x 3,0	375,0	10,85	norm 3 d	▶ 20219	▶ 20220		
304,0 x 2,0	450,0	10,00	norm 3 d	● 20223	● 20224		
306,0 x 3,0	450,0	16,10	norm 3 d	▶ 20227	● 20228		



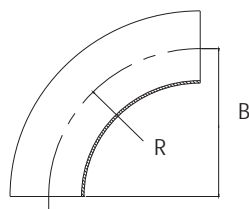
## Bøjning N113

Svejst bøjning, 90°,  $R = d + 100$ , DIN

Welded elbow, 90°,  $R = d + 100$ , DIN

Cert.: EN 10204/3.1

Dim. mm	B/R mm	Kg/ stk/pc	EN 1.4307	EN 1.4404
			AISI 304L	AISI 316L
			Varenr. Article no.	Varenr. Article no.
44,5 x 2,0	144,5	0,50	▶ 20237	▶ 20238
54,0 x 2,0	150,0	0,60	● 20239	● 20240
69,0 x 2,0	165,0	0,90	▶ 20241	● 20242
84,0 x 2,0	180,0	1,20	● 20243	● 20244
85,0 x 2,5	180,0	1,50	▶ 20245	▶ 20246
86,0 x 3,0	180,0	1,72	▶ 20247	▶ 20248
104,0 x 2,0	200,0	1,60	● 20249	● 20250
105,0 x 2,5	200,0	2,00	▶ 20251	▶ 20252
106,0 x 3,0	200,0	2,40	▶ 20253	▶ 20254
129,0 x 2,0	225,0	2,20	● 20255	● 20256
130,0 x 2,5	225,0	2,80	▶ 20257	▶ 20258
131,0 x 3,0	225,0	3,40	▶ 20259	▶ 20260
154,0 x 2,0	250,0	3,00	● 20261	● 20262
155,0 x 2,5	250,0	3,70	▶ 20263	▶ 20264
156,0 x 3,0	250,0	4,50	▶ 20265	● 20266
158,0 x 4,0	250,0	6,10	▶ 20267	▶ 20268
204,0 x 2,0	300,0	4,80	● 14028	● 14029
205,0 x 2,5	300,0	6,00	▶ 20271	▶ 20272
206,0 x 3,0	300,0	7,20	● 20273	● 20274
254,0 x 2,0	350,0	7,00	● 20275	● 20276
255,0 x 2,5	350,0	8,70	▶ 20277	▶ 20278
256,0 x 3,0	350,0	10,00	● 20279	● 20280
258,0 x 4,0	350,0	14,00	▶ 20281	▶ 20282
305,0 x 2,5	400,0	12,00	● 20283	● 20284
306,0 x 3,0	400,0	14,00	● 20285	● 20286
308,0 x 4,0	400,0	19,00	▶ 20287	▶ 20288
355,0 x 2,5	450,0	16,00	▶ 20289	▶ 20290
356,0 x 3,0	450,0	19,00	● 20291	● 20292
358,0 x 4,0	450,0	25,00	▶ 20293	▶ 20294
406,0 x 3,0	500,0	24,00	● 20295	● 20296
408,0 x 4,0	500,0	32,00	▶ 20297	▶ 20298
456,0 x 3,0	550,0	35,20	▶ 20299	▶ 20300
506,0 x 3,0	600,0	35,00	● 20301	● 20302
508,0 x 4,0	600,0	48,00	▶ 20303	▶ 20304
606,0 x 3,0	700,0	66,88	▶ 20386	▶ 20387
608,0 x 4,0	700,0	66,00	▶ 20305	▶ 20306
610,0 x 5,0	700,0	83,00	▶ 20307	▶ 20308

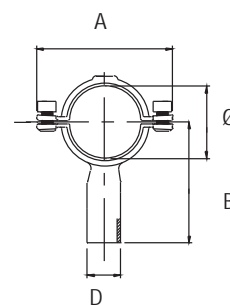


### Rørholder N114

Rørholder med svejseskraft og unbrako skrue, ISO

Pipe support with shaft, hexagon socket cap screw, ISO

Dim. mm	B mm	A mm	Ø mm	D mm	Kg/ stk/pc	AISI 304	Varenr. Article no.
10,2	55,0	60,0	12,2	8,0	0,123	●	20310
13,5	57,0	62,0	15,2	8,0	0,129	●	20311
17,2	59,0	68,0	19,2	8,0	0,180	●	20312
21,3	90,0	72,0	23,3	21,3	0,214	●	20313
26,9	90,0	80,0	28,9	21,3	0,222	●	20314
33,7	90,0	87,0	35,7	21,3	0,235	●	20315
42,4	90,0	96,0	44,4	21,3	0,251	●	20316
48,3	90,0	101,0	50,3	21,3	0,258	●	20317
60,3	90,0	113,0	62,3	21,3	0,280	●	20318
76,1	90,0	113,0	78,1	21,3	0,313	●	20319
88,9	90,0	143,0	90,9	21,3	0,332	●	20320
114,3	107,0	167,0	116,3	21,3	0,420	●	20321
139,7	120,0	193,0	141,7	21,3	0,450	●	20322
168,3	134,0	221,0	170,3	21,3	0,514	●	20323
219,1	160,0	272,0	221,1	21,3	0,630	●	20324
273,0	186,0	326,0	275,0	21,3	0,746	●	20325
323,9	212,0	377,0	325,9	21,3	0,862	▶	20326
355,6	228,0	409,0	357,6	21,3	0,936	▶	20327
406,4	253,0	459,0	408,4	21,3	1,050	▶	20328

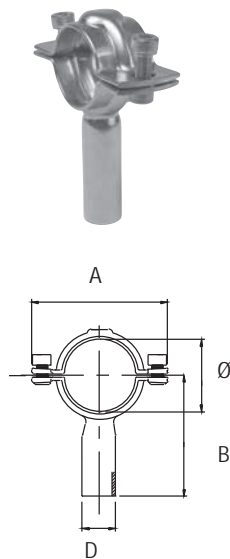


## Rørholder N114

Rørholder med svejseskæft og unbrako skrue, DIN

Pipe support with shaft, hexagon socket cap screw, DIN

Dim. mm	B mm	A mm	Ø mm	D mm	Kg/ stk/pc	AISI 304	Varenr. Article no.
18 - 21,0	90,0	72,0	21,0	21,3	0,209	●	20329
25 - 26,0	90,0	80,0	26,0	21,3	0,224	●	20330
29 - 31,0	90,0	80,0	31,0	21,3	0,225	●	20331
36 - 38,0	90,0	91,0	38,0	21,3	0,242	●	20332
45 - 46,0	90,0	99,0	46,0	21,3	0,256	●	20333
54 - 56,0	90,0	107,0	56,0	21,3	0,271	●	20334
70 - 71,0	90,0	123,0	71,0	21,3	0,298	●	20335
75 - 76,0	90,0	129,0	76,0	21,3	0,307	●	20336
84 - 86,0	90,0	137,0	86,0	21,3	0,323	●	20337
104 - 106,0	102,0	157,0	106,0	21,3	0,368	●	20338
129 - 131,0	105,0	182,0	131,0	21,3	0,420	●	20339
154 - 156,0	128,0	207,0	156,0	21,3	0,479	●	20340
204 - 206,0	152,0	257,0	206,0	21,3	0,533	●	20341
254 - 256,0	177,0	307,0	256,0	21,3	0,705	●	20342
304 - 306,0	203,0	359,0	306,0	21,3	0,821	●	20343
354 - 356,0	228,0	409,0	356,0	21,3	0,931	▶	20344

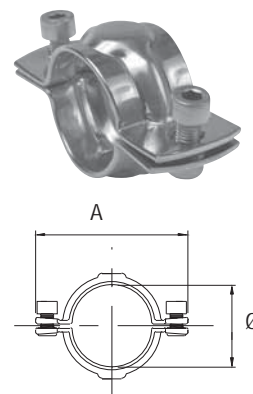


### Rørholder N115

Rørholder i par, med unbraco skrue, ISO

Pipe support in pairs, hexagon cocket cap screw, ISO

Dim. mm	A mm	Ø mm	Kg/stk	AISI 304	Varenr. Article no.
17,2	68,0	19,2	0,140	●	20403
21,3	72,0	23,3	0,148	●	20345
26,9	80,0	28,9	0,158	●	20346
33,7	87,0	35,7	0,174	●	20347
42,4	96,0	44,4	0,194	●	20348
48,3	101,0	50,3	0,204	●	20349
60,3	113,0	62,3	0,232	●	20350
76,1	129,0	78,1	0,271	●	20351
88,9	143,0	90,9	0,298	●	20352
114,3	167,0	116,3	0,382	●	20353
139,7	193,0	141,7	0,412	●	20354
168,3	221,0	170,3	0,476	●	20355
219,1	272,0	221,1	0,588	●	20356
273,0	326,0	275,0	0,708	▶	20357
323,9	377,0	325,9	0,824	▶	20358
355,6	409,0	357,6	0,898	▶	20359

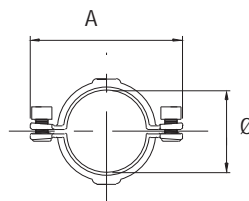


## Rørholder N115

Rørholder i par, med unbraco skrue, DIN

Pipe support in pairs, hexagon socket cap screw, DIN

Dim. mm	A mm	Ø mm	Kg/ stk/pc	AISI 304	Varenr. Article no.
18,0 - 21,0	72,0	21,0	0,140		▶ 20360
25,0 - 26,0	80,0	26,0	0,158		● 20361
29,0 - 31,0	80,0	31,0	0,172		● 20362
36,0 - 38,0	91,0	38,0	0,182		● 20363
41,0	92,0	41,0	0,250		● 33422
45,0 - 46,0	99,0	46,0	0,200		● 20364
51,0	103,0	51,0	0,257		● 33423
53,0	103,0	53,0	0,258		● 33424
54,0 - 56,0	107,0	56,0	0,218		● 20365
63,5	116,0	63,5	0,260		● 33425
70,0 - 71,0	123,0	71,0	0,254		● 20366
75,0 - 76,0	129,0	76,0	0,266		● 20367
84,0 - 86,0	137,0	86,0	0,286		● 20368
102,0	154,0	102,0	0,330		● 33426
104,0 - 106,0	157,0	106,0	0,330		● 20369
129,0 - 131,0	182,0	131,0	0,386		● 20370
154,0 - 156,0	207,0	156,0	0,440		● 20371
204,0 - 206,0	257,0	206,0	0,494		● 20372
254,0 - 256,0	307,0	256,0	0,666		● 20373
304,0 - 306,0	359,0	306,0	0,782		● 20374
354,0 - 356,0	409,0	356,0	0,892		● 20375



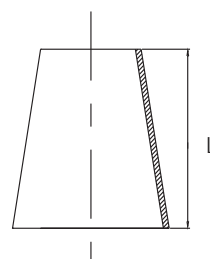
### Konus N124

Svejste konus, koncentrisk, ISO

Welded reducer, concentric, ISO

Cert.: EN 10204/3.1

Dim. mm	L mm	Kg/ stk/pc	EN 1.4404 AISI 316L	Varenr. Article no.
21,3 x 17,2 x 2,0	12,0	0,040	●	14041
26,9 x 17,2 x 2,0	29,0	0,048	●	20900
26,9 x 21,3 x 2,0	17,0	0,020	●	20901
33,7 x 17,2 x 2,0	49,0	0,045	●	20902
33,7 x 21,3 x 2,0	37,0	0,050	●	20903
33,7 x 26,9 x 2,0	20,0	0,030	●	20904
42,4 x 21,3 x 2,0	63,0	0,070	●	20905
42,4 x 26,9 x 2,0	46,0	0,080	●	20906
42,4 x 33,7 x 2,0	26,0	0,050	●	20907
48,3 x 21,3 x 2,0	81,0	0,020	●	20908
48,3 x 26,9 x 2,0	64,0	0,025	●	20909
48,3 x 33,7 x 2,0	44,0	0,090	●	20910
48,3 x 42,4 x 2,0	18,0	0,040	●	20911
60,3 x 26,9 x 2,0	100,0	0,220	●	20912
60,3 x 33,7 x 2,0	80,0	0,180	●	20913
60,3 x 42,4 x 2,0	54,0	0,140	●	20914
60,3 x 48,3 x 2,0	36,0	0,100	●	20915
76,1 x 33,7 x 2,0	127,0	0,355	●	20916
76,1 x 42,4 x 2,0	101,0	0,245	●	20917
76,1 x 48,3 x 2,0	83,0	0,260	●	20918
76,1 x 48,3 x 3,0	83,0	0,390	●	20919
76,1 x 60,3 x 2,0	47,0	0,160	●	20920
76,1 x 60,3 x 3,0	47,0	0,240	●	20921
88,9 x 42,4 x 2,0	139,0	0,460	●	20922
88,9 x 48,3 x 2,0	122,0	0,300	●	20923
88,9 x 60,3 x 2,0	86,0	0,320	●	20924
88,9 x 60,3 x 3,0	86,0	0,480	●	20925
88,9 x 76,1 x 2,0	38,0	0,160	●	20926
88,9 x 76,1 x 3,0	38,0	0,240	●	20927
114,3 x 60,3 x 2,0	162,0	0,570	●	20928
114,3 x 76,1 x 2,0	115,0	0,622	●	20929
114,3 x 76,1 x 3,0	115,0	0,820	●	20930
114,3 x 88,9 x 2,0	76,0	0,390	●	20931
114,3 x 88,9 x 3,0	76,0	0,580	●	20932
139,7 x 76,1 x 3,0	191,0	1,050	●	20933
139,7 x 88,9 x 3,0	152,0	1,300	●	20934
139,7 x 114,3 x 3,0	76,0	0,730	●	20935
168,3 x 88,9 x 3,0	238,0	2,000	●	20936
168,3 x 114,3 x 3,0	162,0	1,700	●	20937
168,3 x 139,7 x 3,0	86,0	1,000	●	20938
219,1 x 139,7 x 3,0	238,0	3,200	●	20939
219,1 x 168,3 x 3,0	152,0	2,200	●	20940
273,0 x 168,3 x 3,0	314,0	5,200	●	20941

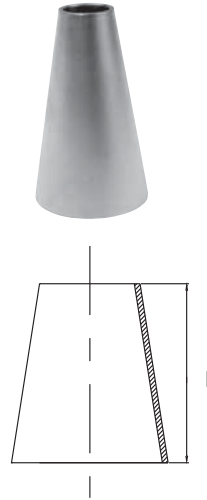


## Konus N124

Svejst konus, koncentrisk, ISO  
Welded reducer, concentric, ISO

Cert.: EN 10204/3.1

Dim. mm	L mm	Kg/ stk/pc	EN 1.4404 AISI 316L Varenr. Article no.
273,0 x 219,1 x 3,0	161,0	3,000	▶ 20942
323,9 x 219,1 x 3,0	312,0	6,400	▶ 20943
323,9 x 273,0 x 3,0	152,0	3,400	▶ 20944
355,6 x 273,0 x 3,0	244,0	5,900	▶ 20945
355,6 x 323,9 x 3,0	94,0	2,400	▶ 20946
406,4 x 323,9 x 3,0	244,0	6,800	▶ 20947
406,4 x 355,6 x 3,0	150,0	6,995	▶ 20948
457,0 x 406,4 x 3,0	150,0	7,560	▶ 20949

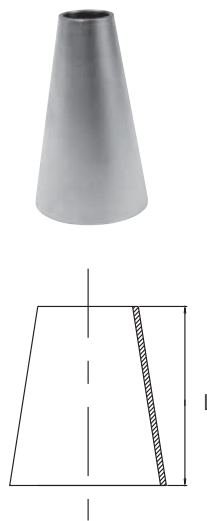


## Konus N124

Svejst konus, koncentrisk, DIN  
Welded reducer, concentric, DIN

Cert.: EN 10204/3.1

Dim. mm	L mm	Kg/ stk/pc	EN 1.4404 AISI 316L Varenr. Article no.
25,0 x 20,0 x 2,0	15,0	0,020	▶ 20951
29,0 x 19,0 x 2,0	30,0	0,026	● 20952
29,0 x 24,0 x 2,0	15,0	0,030	● 20953
30,0 x 20,0 x 2,0	30,0	0,050	▶ 20954
30,0 x 25,0 x 2,0	15,0	0,030	▶ 20955
36,0 x 24,0 x 2,0	36,0	0,046	● 20956
36,0 x 29,0 x 2,0	21,0	0,046	▶ 20957
44,0 x 24,0 x 2,0	60,0	0,077	● 20958
44,0 x 25,0 x 2,0	57,0	0,072	▶ 20959
44,0 x 29,0 x 2,0	45,0	0,095	● 20960
44,0 x 30,0 x 2,0	42,0	0,065	▶ 20961
44,0 x 36,0 x 2,0	24,0	0,065	▶ 20962
54,0 x 29,0 x 2,0	75,0	0,175	● 20963
54,0 x 30,0 x 2,0	60,0	0,135	▶ 20964
54,0 x 36,0 x 2,0	54,0	0,130	● 20965
54,0 x 44,0 x 2,0	30,0	0,075	● 20966
69,0 x 44,0 x 2,0	75,0	0,155	● 20967
69,0 x 54,0 x 2,0	45,0	0,085	● 20968
84,0 x 44,0 x 2,0	120,0	0,036	● 20969
84,0 x 54,0 x 2,0	90,0	0,300	● 20970
84,0 x 69,0 x 2,0	45,0	0,215	● 20971
104,0 x 54,0 x 2,0	150,0	0,570	● 20972
104,0 x 69,0 x 2,0	105,0	0,500	● 20973



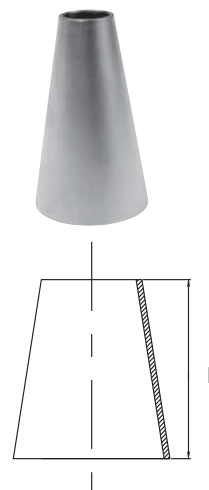
### Konus N 124

Svejste konus, koncentrisk, DIN

Welded reducer, concentric, DIN

Cert.: EN 10204/3.1

Dim. mm	L mm	Kg/ stk/pc	EN 1.4404 AISI 316L Varenr. Article no.
104,0 x 84,0 x 2,0	60,0	0,260	● 20974
129,0 x 54,0 x 2,0	225,0	1,000	● 20975
129,0 x 84,0 x 2,0	135,0	0,700	● 20976
129,0 x 104,0 x 2,0	75,0	0,430	● 20977
154,0 x 54,0 x 2,0	300,0	1,470	● 20978
154,0 x 84,0 x 2,0	210,0	1,670	● 20979
154,0 x 104,0 x 2,0	150,0	1,280	● 20980
154,0 x 129,0 x 2,0	75,0	0,500	● 20981
204,0 x 104,0 x 2,0	300,0	3,100	● 20982
204,0 x 129,0 x 2,0	225,0	2,900	● 20983
204,0 x 154,0 x 2,0	150,0	1,650	● 20984
254,0 x 129,0 x 2,0	375,0	3,580	● 20985
254,0 x 154,0 x 2,0	300,0	1,600	● 20986
254,0 x 204,0 x 2,0	150,0	1,700	● 20987
305,0 x 205,0 x 2,5	300,0	3,800	▶ 20988
305,0 x 255,0 x 2,5	150,0	2,600	▶ 20990
306,0 x 206,0 x 3,0	300,0	5,700	● 20989
306,0 x 256,0 x 3,0	150,0	3,200	● 20991
355,0 x 255,0 x 2,5	300,0	5,700	▶ 20992
355,0 x 305,0 x 2,5	150,0	3,100	▶ 20994
356,0 x 206,0 x 3,0	450,0	9,410	▶ 27715
356,0 x 256,0 x 3,0	300,0	6,900	● 20993
356,0 x 306,0 x 3,0	150,0	3,700	● 20995
406,0 x 306,0 x 3,0	300,0	8,000	● 20996
406,0 x 356,0 x 3,0	150,0	4,300	● 20997
456,0 x 356,0 x 3,0	300,0	6,995	▶ 20998
456,0 x 406,0 x 3,0	150,0	7,560	▶ 20999
506,0 x 306,0 x 3,0	600,0	18,200	▶ 27716
506,0 x 356,0 x 3,0	450,0	15,000	▶ 27717
506,0 x 406,0 x 3,0	300,0	10,300	● 14040



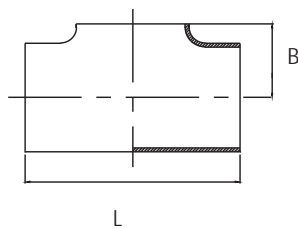
## T-stykke N127

Svejst t-stykke, opkravet, DIN

Welded t-pcs., pulled, DIN

Cert.: EN 10204/3.1

Dim. mm	L mm	B mm	Kg/ stk/pc	EN 1.4404 AISI 316L Varenr. Article no.
38,0 x 2,0	95,0	29,0	0,150	● 21000
44,5 x 2,0	95,0	34,0	0,135	● 20415
54,0 x 2,0	114,0	41,0	0,220	● 21001
70,0 x 2,0	127,0	51,0	0,380	● 20414
84,0 x 2,0	171,0	58,0	0,570	● 21002
104,0 x 2,0	210,0	58,0	0,900	● 21003
105,0 x 2,5	210,0	58,0	1,120	▶ 21004
106,0 x 3,0	210,0	58,0	1,360	▶ 21071
129,0 x 2,0	248,0	74,0	1,390	● 21005
130,0 x 2,5	248,0	74,0	1,750	▶ 21006
154,0 x 2,0	286,0	88,0	2,000	● 21007
155,0 x 2,5	286,0	88,0	2,500	▶ 21008
204,0 x 2,0	356,0	114,0	4,520	● 21009
205,0 x 2,5	356,0	114,0	5,450	▶ 21010
206,0 x 3,0	356,0	114,0	5,670	● 21011
254,0 x 2,0	432,0	137,0	7,090	● 21012
255,0 x 2,5	432,0	137,0	8,300	▶ 21013
256,0 x 3,0	432,0	137,0	8,500	● 21014



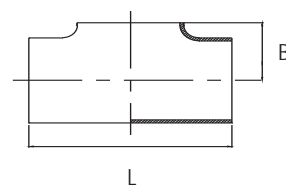
**T-stykke N127**

Svejst t-stykke, opkravet, ISO

Welded t-pcs., pulled, ISO

Cert.: EN 10204/3.1

Dim. mm	L mm	B mm	Kg/ stk/pc	EN 1.4404 AISI 316L Varenr. Article no.
13,5 x 1,6	51,0	12,0	0,030	● 20407
17,2 x 1,6	51,0	15,0	0,025	● 21039
17,2 x 2,3	51,0	15,0	0,080	● 21040
21,3 x 1,6	51,0	18,0	0,150	● 21041
21,3 x 2,6	51,0	18,0	0,160	● 21042
26,9 x 2,0	57,0	22,0	0,170	● 21043
26,9 x 2,6	57,0	22,0	0,200	● 21044
33,7 x 2,0	76,0	26,0	0,250	● 21045
33,7 x 2,6	76,0	24,0	0,300	● 21046
42,4 x 2,0	95,0	33,0	0,175	● 21047
42,4 x 2,6	95,0	33,0	0,530	● 21048
48,3 x 2,0	114,0	37,0	0,490	● 21049
48,3 x 2,6	114,0	36,0	0,620	● 21050
60,3 x 2,0	127,0	44,0	0,670	● 21051
60,3 x 2,6	127,0	44,0	0,850	● 21052
76,1 x 2,0	152,0	53,0	0,970	● 21053
76,1 x 3,6	152,0	53,0	1,200	● 21054
88,9 x 2,0	171,0	60,0	1,240	● 21055
88,9 x 3,0	171,0	60,0	1,780	● 21056
114,3 x 2,0	210,0	67,0	1,680	● 21057
114,3 x 3,0	210,0	67,0	2,260	● 21058
139,7 x 2,5	248,0	81,0	2,790	▶ 21059
139,7 x 3,0	248,0	81,0	3,330	● 21060
168,3 x 2,5	286,0	96,0	3,710	▶ 21061
168,3 x 3,0	286,0	96,0	4,430	● 21062
219,1 x 3,0	356,0	120,0	9,570	● 21064
219,3 x 2,5	356,0	120,0	7,210	▶ 21063
273,0 x 3,0	432,0	148,0	14,30	▶ 21065



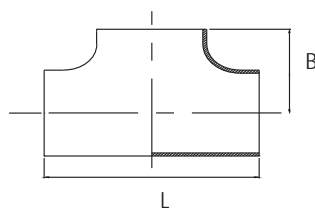
## T-stykke N128

Svejst t-stykke, presset, DIN 2615, DIN

Welded t-pcs., pressed, DIN 2615, DIN

Cert.: EN 10204/3.1

Dim. mm	L mm	B mm	Kg/ stk/pc	EN 1.4404 AISI 316L	Varenr. Article no.
20,0 x 2,0	50,0	25,0	0,080	●	21019
25,0 x 2,0	58,0	30,0	0,095	●	21020
30,0 x 2,0	76,0	35,0	0,100	●	21021
38,0 x 2,0	86,0	43,0	0,150	●	21022
38,0 x 2,5	96,0	43,0	0,270	▶	21023
44,5 x 2,0	114,0	50,0	0,140	●	21024
54,0 x 2,0	128,0	61,0	0,220	●	21025
69,0 x 2,0	152,0	73,0	0,380	●	21026
70,0 x 2,0	152,0	73,0	0,420	▶	21027
84,0 x 2,0	172,0	82,0	0,570	●	21028
104,0 x 2,0	210,0	98,0	0,900	●	21077
105,0 x 2,5	210,0	98,0	1,120	▶	21029
129,0 x 2,0	230,0	115,0	2,100	●	20419
156,0 x 3,0	286,0	135,0	4,900	●	20418
206,0 x 3,0	356,0	170,0	7,600	●	20417
256,0 x 3,0	400,0	200,0	12,540	●	21076
306,0 x 3,0	508,0	254,0	13,000	●	20420
356,0 x 3,0	558,0	279,0	18,000	▶	20421
406,0 x 3,0	610,0	305,0	28,000	▶	20422



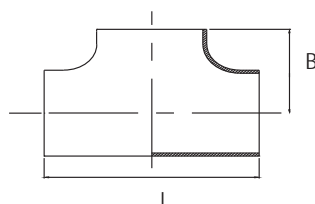
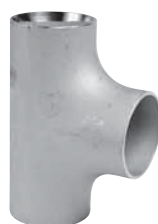
## T-stykke N128

Svejst t-stykke, presset, DIN 2615, ISO

Welded t-pcs., pressed, DIN 2615, ISO

Cert.: EN 10204/3.1

Dim. mm	L mm	B mm	Kg/ stk/pc	EN 1.4404 AISI 316L	Varenr. Article no.
17,2 x 1,6	50,0	25,0	0,070	●	20416
21,3 x 2,0	50,0	25,0	0,060	●	21030
26,9 x 2,0	58,0	29,0	0,065	●	21031
33,7 x 2,0	76,0	38,0	0,110	●	21032
42,4 x 2,0	96,0	48,0	0,180	●	21033
48,3 x 2,0	114,0	57,0	0,250	●	21034
60,3 x 2,6	128,0	64,0	0,340	●	21035
76,1 x 2,6	152,0	76,0	1,200	●	21036
88,9 x 2,6	172,0	86,0	1,500	●	21037
114,3 x 2,6	210,0	105,0	2,030	●	21038



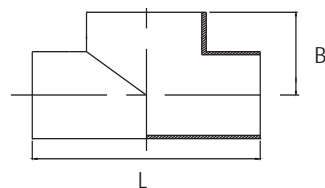
### T-stykke N129

Svejst t-stykke med indsvæjst gren, DIN

Welded t-pcs., with branch, DIN

Cert.: EN 10204/3.1

Dim. mm	L mm	B mm	Kg/ stk/pc	EN 1.4404 AISI 316L	Varenr. Article no.
204,0 x 2,0	500,0	250,0	6,3		▶ 21101
254,0 x 2,0	432,0	216,0	7,5		▶ 21080
304,0 x 2,0	508,0	254,0	9,7		▶ 21079
306,0 x 3,0	508,0	254,0	15,3		● 21015
355,0 x 2,5	720,0	360,0	15,0		▶ 21078
356,0 x 3,0	558,0	279,0	17,6		● 21016
406,0 x 3,0	610,0	305,0	24,2		● 21017
456,0 x 3,0	686,0	343,0	31,2		▶ 21018
506,0 x 3,0	762,0	381,0	36,0		▶ 27710



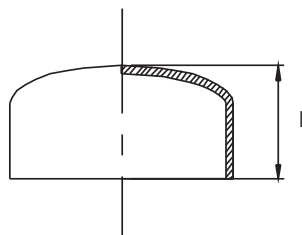
## Endebund N140

Endebund, kløpperform, DIN 28011, DIN

End cap, DIN 28011, DIN

Cert.: EN 10204/3.1

Dim. mm	L mm	Kg/ stk/pc	EN 1.4404 AISI 316L Varenr. Article no.
54,0 x 2,0	17,0	0,058	● 18250
84,0 x 2,0	24,0	0,136	● 18251
104,0 x 2,0	30,0	0,226	● 18252
129,0 x 2,0	34,0	0,318	● 18253
154,0 x 2,0	40,0	0,448	● 18254
204,0 x 2,0	47,0	0,718	● 18255
256,0 x 3,0	66,0	2,300	● 18256
306,0 x 3,0	75,0	2,700	● 18257
356,0 x 3,0	79,0	3,550	● 18258
406,0 x 3,0	88,0	4,700	● 18259
456,0 x 3,0	108,0	6,200	● 16900
506,0 x 3,0	108,0	7,400	● 16901



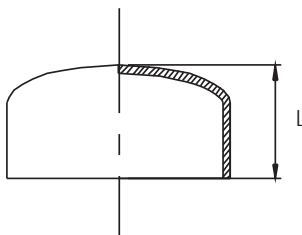
## Endebund N140

Endebund, kløpperform, DIN 28011, ISO

End cap, DIN 28011, ISO

Cert.: EN 10204/3.1

Dim. mm	L mm	Kg/ stk/pc	EN 1.4404 AISI 316L Varenr. Article no.
21,3 x 2,0	13,0	0,011	● 18282
26,9 x 2,0	16,0	0,018	● 18281
33,7 x 2,0	13,0	0,025	● 18260
42,4 x 2,0	16,0	0,042	● 18269
48,3 x 2,0	20,0	0,058	● 18261
60,3 x 2,0	19,0	0,078	● 18262
76,1 x 2,0	26,0	0,131	● 18263
88,9 x 2,0	29,0	0,175	● 18264
114,3 x 2,0	28,0	0,243	● 18265
139,7 x 2,0	35,0	0,350	● 18266
168,3 x 2,0	42,0	0,554	● 18267
219,1 x 2,0	54,0	0,830	● 18268
219,1 x 3,0	54,0	1,400	● 32129
273,0 x 3,0	68,0	2,520	● 18270
323,9 x 3,0	72,0	3,150	● 18271



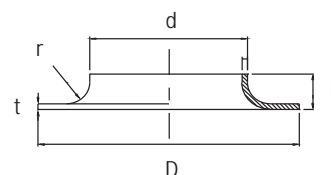
**Svejskrave N 116**

Svejskrave, DIN

Welding collar, DIN

Cert.: EN 10204/3.1

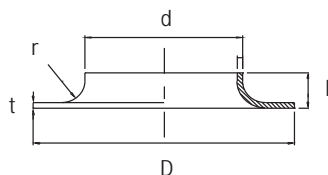
Tils. mm	Dim.	d mm	D mm	t mm	r mm	h mm	Kg/ stk/pc	EN 1.4306	1.4404
								AISI 304L	316L
								Varenr. Article no.	Varenr. Article no.
15	21,0 x 3,0	21	45	3	3	8	0,036	▶ 20840	● 20841
20	26,0 x 3,0	26	58	3	3	8	0,058	▶ 20842	● 20843
25	31,0 x 3,0	31	68	3	4	10	0,082	● 20844	● 20845
32	38,0 x 3,0	38	78	3	4	14	0,125	▶ 20848	● 20849
40	46,0 x 3,0	46,5	88	3	4	16	0,138	▶ 20850	● 20851
50	56,0 x 3,0	56	102	3	5	16	0,181	● 20852	● 20853
65	71,0 x 3,0	71	122	3	5	19	0,238	▶ 20854	● 20855
70	76,0 x 3,0	76	122	3	5	18	0,256	▶ 20856	▶ 20857
80	86,0 x 3,0	86	138	3	5	20	0,287	● 20858	● 20859
100	106,0 x 3,0	106	158	3	5	22	0,390	● 20860	● 20861
125	131,0 x 3,0	131	188	3	5	25	0,499	● 20862	● 20863
150	156,0 x 3,0	156	212	3	5	25	0,602	● 20864	● 20865
200	206,0 x 3,0	206	268	3	5	25	0,855	● 20866	● 20867
250	256,0 x 3,0	256	320	3	5	26	1,071	● 20868	● 20869
300	306,0 x 3,0	306	370	3	5	26	1,289	● 20870	● 20871
350	356,0 x 3,0	356	430	3	6	26	1,704	● 20872	● 20873
400	406,0 x 3,0	406	480	3	6	30	1,837	● 20874	● 20875
450	458,0 x 4,0	458	530	4	6	30	2,135	▶ 20876	● 20877
500	508,0 x 4,0	508	580	4	6	40	4,086	● 20878	● 20879



**Svejskrave N116**  
*Svejskraver, ISO*  
*Welding collar, ISO*

Cert.: EN 10204/3.1

Tils. mm	Dim.	d mm	D mm	t mm	r mm	h mm	Kg/ stk/pc	EN 1.4404 AISI 316L	Varenr. Article no.
10	17,2 x 3,0	17,2	40	3	3	7	0,029	▶ 20880	▶ 20880
15	21,3 x 3,0	21,3	45	3	3	8	0,036	● 20881	● 20881
20	26,9 x 3,0	26,9	58	3	3	8	0,058	● 20882	● 20882
25	33,7 x 3,0	33,7	68	3	4	10	0,080	● 20883	● 20883
32	42,4 x 3,0	42,4	78	3	4	12	0,103	● 20884	● 20884
40	48,3 x 3,0	48,3	88	3	4	15	0,133	● 20885	● 20885
50	60,3 x 3,0	60,3	102	3	5	18	0,173	● 20886	● 20886
65	76,1 x 3,0	76,1	122	3	5	18	0,238	● 20887	● 20887
80	88,9 x 3,0	88,9	138	3	5	22	0,303	● 20888	● 20888
100	114,3 x 3,0	114,3	158	3	5	22	0,368	● 20889	● 20889
125	139,7 x 3,0	139,7	188	3	5	22	0,477	● 20890	● 20890
150	168,3 x 3,0	168,3	212	3	5	25	0,569	● 20891	● 20891
200	219,1 x 3,0	219,1	268	3	5	25	0,777	● 20892	● 20892
250	273,0 x 3,0	273,0	320	3	5	26	0,856	● 20893	● 20893
300	323,9 x 3,0	323,9	370	3	5	26	1,017	● 20894	● 20894
350	355,6 x 3,0	355,6	430	3	6	26	1,704	▶ 20895	▶ 20895
400	406,4 x 3,0	406,4	480	3	6	30	1,837	● 20896	● 20896
450	457,0 x 4,0	457,0	530	4	6	30	2,295	▶ 20897	▶ 20897
500	508,0 x 4,0	508,0	580	4	6	40	2,870	● 20898	● 20898



### Løsflange N118

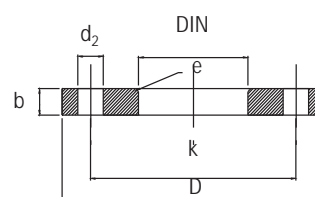
Løsflange af aluminium, dim. med red. godstykkelser i henhold til DIN 2642, DIN

Loose flange of aluminum, reduced thickness, finished, DIN 2642, DIN

Farve/Colour: Ral 7001

Cert.: EN 10204/3.1

Tils.	Dim. mm	D mm	DIN mm	b mm	k mm	e mm	d <sub>2</sub> mm	Bolte/Bolts stk/pc	kg/ stk/pc	Varenr. Article no.
15	20,0	95	23	12	65	3	14	4	0,200	● 32200
20	25,0	105	28	12	75	3	14	4	0,230	● 32201
25	30,0	115	33	12	85	4	14	4	0,280	● 32202
32	38,0	140	41	16	100	4	18	4	0,550	● 32203
40	44,5	150	48	16	110	4	18	4	0,580	● 32204
50	56,0	165	60	16	125	5	18	4	0,730	● 32205
65	71,0	185	73	16	145	5	18	4	0,820	● 32206
80	86,0	200	90	18	160	5	18	8	1,170	● 32207
100	106,0	220	111	18	180	5	18	8	1,220	● 32208
125	131,0	250	136	18	210	5	18	8	1,470	● 32209
150	156,0	285	161	18	240	5	22	8	1,880	● 32210
200	206,0	340	212	20	295	5	22	8	2,750	● 32211
250	256,0	395	264	22	350	5	22	12	3,720	● 32212
300	306,0	445	315	22	400	5	22	12	4,230	● 32213
350	356,0	505	362	22	460	6	22	16	4,740	● 32214
400	406,0	565	413	25	515	6	26	16	6,180	● 32215
450	456,0	615	465	25	565	6	26	20	7,190	● 32216
500	508,0	670	517	28	620	6	26	20	9,470	● 32217
600	610,0	780	618	30	725	6	30	20	15,800	● 32218



## Løsflange N118

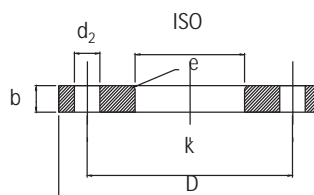
Løsflange af aluminium, dim. med red. godstykkelse i henhold til DIN 2642, ISO

Loose flange of aluminum, reduced thickness, finished, DIN 2642, ISO

Farve/Colour: Ral 7001

Cert.: EN 10204/3.1

Tils.	Dim. mm	D mm	DIN mm	b mm	k mm	e mm	d <sub>2</sub> mm	Bolte/Bolts stk/pc	kg/ stk/pc	Varenr. Article no.
15	21,3	95	24	12	65	3	14	4	0,200	● 32220
20	26,9	105	30	12	75	3	14	4	0,230	● 32221
25	33,7	115	36	12	85	4	14	4	0,280	● 32222
32	42,4	140	46	16	100	4	18	4	0,550	● 32223
40	48,3	150	54	16	110	4	18	4	0,580	● 32224
50	60,3	165	65	16	125	5	18	4	0,730	● 32225
65	76,1	185	81	16	145	5	18	4	0,820	● 32226
80	88,9	200	94	18	160	5	18	8	1,170	● 32227
100	114,3	220	119	18	180	5	18	8	1,220	● 32228
125	139,7	250	145	18	210	5	18	8	1,470	● 32229
150	168,3	285	173	18	240	5	22	8	1,880	● 32230
200	219,1	340	225	20	295	5	22	8	2,750	● 32231
250	273,0	395	279	22	350	5	22	12	3,720	● 32232
300	323,9	445	329	22	400	5	22	12	4,230	● 32233
350	355,6	505	362	22	460	6	22	16	4,740	● 32214
400	406,4	565	413	25	515	6	26	16	6,180	● 32215
450	456,0	615	465	25	565	6	26	20	7,190	● 32216
500	508,0	670	517	28	620	6	26	20	9,470	● 32217
600	610,0	780	618	30	725	6	30	20	15,800	▶ 32238



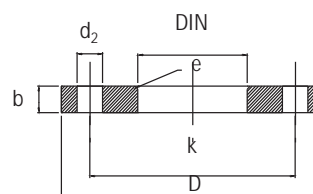
### Løsflange N119

Løsflange, NT 10, DIN 2642, DIN

Loose flange, NT 10, DIN 2642, DIN

Cert.: EN 10204/3.1

Tils.	Dim. mm	D mm	DIN mm	b mm	k mm	e mm	d <sub>2</sub> mm	Bolte/Bolts stk/pc	kg/ stk/pc	EN 1.4404 AISI 316L	Varenr. Article no.
50	56,0	165	60	16	125	5	18	4	2,20	● 16720	
80	86,0	200	90	18	160	5	18	8	3,32	● 16721	
100	106,0	220	111	18	180	5	18	8	3,67	● 16722	
125	131,0	250	136	18	210	5	18	8	4,54	● 16723	
150	156,0	285	161	18	240	5	22	8	5,60	● 16724	
200	206,0	340	212	20	295	5	22	8	7,46	● 16725	
250	256,0	395	264	22	350	5	22	12	10,30	● 16726	
300	306,0	445	315	26	400	5	22	12	14,00	● 16727	
350	356,0	505	362	28	460	6	22	16	18,50	● 20460	
400	406,0	565	413	32	515	6	26	16	25,50	● 20461	
450	456,0	615	463	38	565	6	26	20	35,00	▶ 20462	
500	508,0	670	517	38	620	6	26	20	41,00	● 20463	



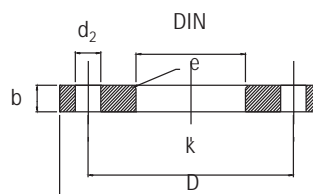
### Løsflange N119

Løsflange, NT 10, DIN 2642, ISO

Loose flange, NT 10, DIN 2642, ISO

Cert.: EN 10204/3.1

Tils.	Dim. mm	D mm	DIN mm	b mm	k mm	e mm	d <sub>2</sub> mm	Bolte/Bolts stk/pc	kg/ stk/pc	EN 1.4404 AISI 316L	Varenr. Article no.
50	60,3	165	65	16	125	5	18	4	2,20	● 16729	
65	76,1	185	81	16	145	5	18	4	3,00	● 16730	
80	88,9	200	94	18	160	5	18	8	3,32	● 16731	
100	114,3	220	119	18	180	5	18	8	3,67	● 16732	
125	139,7	250	145	18	210	5	18	8	4,54	● 16733	
150	168,3	285	173	18	240	5	22	8	5,60	● 16734	
200	219,1	340	225	20	295	5	22	8	7,46	● 16735	
250	273,0	395	279	22	350	5	22	12	10,30	● 20470	
300	323,9	445	329	26	400	5	22	12	14,00	● 20471	



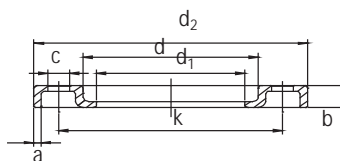
## Løsflange N120

Presset løsflange, NT 10, DIN 2642, ISO

Pressed lap joint flange, NT 10, DIN 2642, ISO

Cert.: EN 10204/3.1

Tils.	Dim.	d2	d1	b	k	a	c	Bolte/Bolts	kg/	EN 1.4301	1.4404
mm	mm	mm	mm	mm	mm	mm	mm	stk/pc	stk/pc	AISI 304	316L
										Varenr. Article no.	Varenr. Article no.
25	33,7	115	37	16,0	85	3	13,5	4	0,33	● 31156	● 31176
32	42,4	140	46	16,0	100	3	17,5	4	0,46	● 31157	● 31177
40	48,3	150	54	17,5	110	4	17,5	4	0,66	● 31158	● 31178
50	60,3	165	65	19,5	125	4	17,5	4	0,81	● 31160	● 31180
65	76,1	185	81	21,0	145	4	17,5	4	0,98	● 31161	● 31181
80	88,9	200	94	21,0	160	4	17,5	8	1,36	● 31163	● 31183
100	114,3	220	119	22,0	180	4	17,5	8	1,74	● 31165	● 31185
125	139,7	250	145	22,0	210	5	17,5	8	2,19	● 31167	● 31187
150	168,3	285	173	26,0	240	5	21,5	8	3,28	● 31169	● 31189
200	219,1	340	225	28,0	295	6	21,5	8	4,63	● 31171	● 31191
250	273,0	395	279	31,0	350	6	21,5	12	6,18	● 31173	● 31193
300	323,9	445	329	34,0	400	6	21,5	12	7,45	● 31175	● 31195
350	355,6	505	362	36,0	460	8	22,0	16	9,78	● 33213	● 33215
400	406,4	565	413	38,0	515	8	26,0	16	11,70	● 33214	● 33216



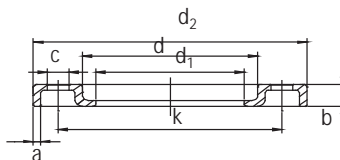
## Løsflange N120

Presset løsflange, NT 10, DIN 2642, DIN

Pressed lap joint flange, NT 10, DIN 2642, DIN

Cert.: EN 10204/3.1

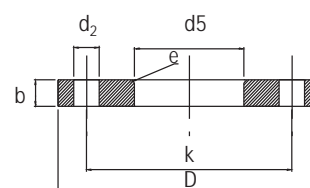
Tils.	Dim.	d2	d1	b	k	a	c	Bolte/Bolts	kg/	EN 1.4301	1.4404
mm	mm	mm	mm	mm	mm	mm	mm	stk/pc	stk/pc	AISI 304	316L
										Varenr. Article no.	Varenr. Article no.
50	56,0	165	58	19,5	125	4	17,5	4	0,81	● 31159	● 31179
80	86,0	200	90	22,0	160	4	17,5	8	1,36	● 31162	● 31182
100	106,0	220	110	23,0	180	4	17,5	8	1,74	● 31164	● 31184
125	131,0	250	135	25,0	210	5	17,5	8	2,19	● 31166	● 31186
150	156,0	285	160	27,0	240	5	21,5	8	3,28	● 31168	● 31188
200	206,0	340	212	31,0	295	6	21,5	8	4,63	● 31170	● 31190
250	256,0	395	262	34,0	350	6	21,5	12	6,18	● 31172	● 31192
300	306,0	445	312	38,0	400	6	21,5	12	7,45	● 31174	● 31194
350	356,0	505	362	36,0	460	8	22,0	16	9,78	● 33213	● 33215
400	406,4	565	413	38,0	515	8	26,0	16	11,70	● 33214	● 33216



### Løsflange N121

Galvaniseret løsflange, R ST 37-2, NT 10, DIN 2642, ISO  
Galvanized loose flange, R ST 37-2, NT 10, DIN 2642, ISO

Tils. mm	Dim. mm	D mm	d <sub>5</sub> mm	b mm	k mm	e mm	d <sub>2</sub> mm	Bolte/Bolts stk/pc	kg/ stk/pc	R ST 37-2
10	17,2	90	19	14	60	3	14	4	0,599	Varenr. Articleno ▶ 22013
15	21,3	95	24	14	65	3	14	4	0,689	● 20603
20	26,9	105	30	14	75	3	14	4	0,806	● 20604
25	33,7	115	36	16	85	4	14	4	1,110	● 20605
32	42,4	140	46	16	100	4	18	4	1,640	● 20606
40	48,3	150	54	16	110	4	18	4	1,860	● 20607
50	60,3	165	65	16	125	5	18	4	2,200	● 20608
65	76,1	185	81	16	145	5	18	4	2,620	● 20609
80	88,9	200	94	18	160	5	18	8	3,320	● 20610
100	114,3	220	119	18	180	5	18	8	3,670	● 20611
125	139,7	250	145	18	210	5	18	8	4,540	● 20612
150	168,3	285	173	18	240	5	22	8	5,600	● 20613
200	219,1	340	225	20	295	5	22	8	7,460	● 20614
250	273,0	395	279	22	350	5	22	12	10,300	▶ 20615
300	323,9	445	329	26	400	5	22	12	14,000	▶ 20616
350	355,6	505	362	28	460	6	22	16	18,000	▶ 20617

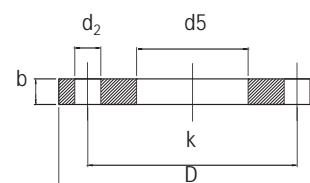


### Plan flange N122

Plan flange til påsvejsning, NT 10, DIN 2576, ISO  
Flat flange for welding, NT 10, DIN 2576, ISO

Cert.: EN 10204/3.1

Tils. mm	Dim. mm	D mm	d <sub>5</sub> mm	b mm	k mm	d <sub>2</sub> mm	Bolte/Bolts stk/pc	kg/ stk/pc	EN 1.4404 AISI 316L
10	17,2	90	17,7	14	60	14	4	0,605	● 20632
15	21,3	95	22,0	14	65	14	4	0,669	● 20633
20	26,9	105	27,6	16	75	14	4	0,936	● 20634
25	33,7	115	34,4	16	85	14	4	1,110	● 20635
32	42,4	140	43,1	16	100	18	4	1,620	● 20636
40	48,3	150	49,0	16	110	18	4	1,860	● 20637
50	60,3	165	61,1	18	125	18	4	2,470	● 20646
65	76,1	185	77,1	18	145	18	4	3,000	● 20638
80	88,9	200	90,3	20	160	18	8	3,790	● 20639
100	114,3	220	115,9	20	180	18	8	4,030	● 20640
125	139,7	250	141,6	22	210	18	8	5,460	● 20641
150	168,3	285	170,5	22	240	22	8	6,570	● 20642
200	219,1	340	221,8	24	295	22	8	9,310	● 20643
250	273,0	395	276,2	26	350	22	12	11,900	● 20644
300	323,9	445	327,6	26	400	22	12	13,800	● 20645

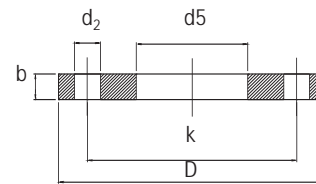


## Plan flange N122

Plan flange til påsvejsning, NT 10, DIN 2576, DIN  
Flat flange for welding, NT 10, DIN 2576, DIN

Cert.: EN 10204/3.1

Tils. mm	Dim. mm	D mm	d <sub>5</sub> mm	b mm	k mm	d <sub>2</sub> mm	Bolte/Bolts stk/pc	kg/ stk/pc	EN 1.4404 AISI 316L	Varenr. Article no.
50	54,0	165	54,5	18	125	18	4	2,47	●	20408
80	84,0	200	85,0	20	160	18	8	3,79	●	20409
100	104,0	220	105,5	20	180	18	8	4,03	●	20410
125	129,0	250	130,5	22	210	18	8	5,46	●	20411
150	154,0	285	155,5	22	240	22	8	6,57	●	20412
200	204,0	340	205,5	24	295	22	8	9,31	●	20413
250	254,0	395	257,0	26	350	22	12	12,50	●	20450
300	306,0	445	309,7	26	400	22	12	15,44	●	20475
350	356,0	505	359,7	28	460	22	16	20,60	●	20476
400	406,0	565	411,0	32	515	26	16	27,90	●	20478
450	456,0	615	462,3	38	565	26	20	35,60	●	20479
500	506,0	670	513,6	38	620	26	20	41,10	▶	20477

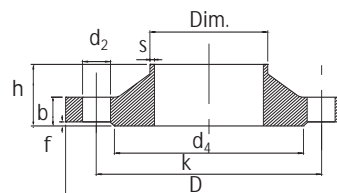


## Svejseflange N123

Svejseflange med krave, NT 16, DIN 2633, ISO  
Welding neck flange, NT 16, DIN 2633, ISO

Cert.: EN 10204/3.1

Tils. mm	Dim. mm	D mm	b mm	k mm	h mm	s mm	d <sub>4</sub> mm	f mm	d <sub>2</sub> mm	Bolte/Bolts stk/pc	kg/ stk/pc	EN 1.4404 AISI 316L	Varenr. Article no.
10	17,2	90	14	60	35	1,8	40	2	14	4	0,580	▶	11039
15	21,3	95	14	65	35	2,0	45	2	14	4	0,580	●	20647
20	26,9	105	16	75	38	2,3	58	2	14	4	0,648	●	20648
25	33,7	115	16	85	38	2,6	68	2	14	4	0,952	●	20650
32	42,4	140	16	100	40	2,6	78	2	18	4	1,140	●	20651
40	48,3	150	16	110	42	2,6	88	3	18	4	1,860	●	20652
50	60,3	165	18	125	45	2,9	102	3	18	4	2,530	●	20653
65	76,1	185	18	145	45	2,9	122	3	18	4	3,060	●	20654
80	88,9	200	20	160	50	3,2	138	3	18	8	3,700	●	20655
100	114,3	220	20	180	52	3,6	158	3	18	8	4,620	●	20656
125	139,7	250	22	210	55	4,0	188	3	18	8	6,300	●	20657
150	168,3	285	22	240	55	4,5	212	3	22	8	7,750	●	20658
200	219,1	340	24	295	62	5,9	268	3	22	12	11,000	●	20659
250	273,0	405	26	355	70	6,3	320	3	26	12	15,600	▶	20485
300	323,9	460	28	410	78	7,1	378	4	26	12	22,000	▶	20486
350	355,6	520	30	470	82	8,0	438	4	26	16	31,200	▶	11040



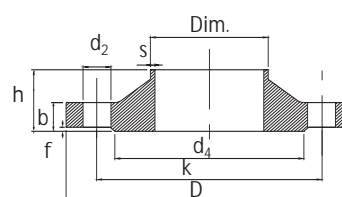
### Svejsseflange N123

Svejsseflange med krave, NT 16, DIN 2633, DIN

Welding neck flange, NT 16, DIN 2633, DIN

Cert.: EN 10204/3.1

Tils. mm	Dim. mm	D mm	b mm	k mm	h mm	s mm	d <sub>4</sub> mm	f mm	d <sub>2</sub> mm	Bolte/Bolts stk/pc	kg/ stk/pc	EN 1.4404 AISI 316L	Varenr. Article no.
40	44,5	150	16	110	42	2,6	88	3	18	4	1,86	● 21119	
50	57,0	165	18	125	45	2,9	102	3	18	4	2,53	● 21120	
65	70,0	185	18	145	45	2,9	122	3	18	4	3,06	● 21121	
80	84,0	200	20	160	50	3,2	138	3	18	8	3,70	● 21122	
100	108,0	220	20	180	52	3,6	158	3	18	8	4,62	● 21123	
150	159,0	285	22	240	55	4,5	212	3	22	8	6,30	● 21125	



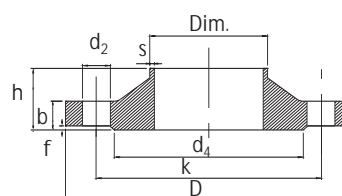
### Svejsseflange N123

Svejsseflange med krave, NT 40, DIN 2635, ISO

Welding neck flange, NT 40, DIN 2635, ISO

Cert.: EN 10204/3.1

Tils. mm	Dim. mm	D mm	b mm	k mm	h mm	s mm	d <sub>4</sub> mm	f mm	d <sub>2</sub> mm	Bolte/Bolts stk/pc	kg/ stk/pc	EN 1.4404 AISI 316L	Varenr. Article no.
15	21,3	95	16	65	38	2,0	45	2	14	4	0,746	● 20660	
20	26,9	105	18	75	40	2,3	58	2	14	4	1,060	● 20661	
25	33,7	115	18	85	40	2,6	68	2	14	4	1,290	● 20662	
32	42,4	140	18	100	42	2,6	78	2	18	4	1,880	● 20663	
40	48,3	150	18	110	45	2,6	88	3	18	4	2,330	● 20664	
50	60,3	165	20	125	48	2,9	102	3	18	4	2,820	● 20665	
65	76,1	185	22	145	52	2,9	122	3	18	8	3,740	● 20666	
80	88,9	200	24	160	58	3,2	138	3	18	8	4,750	● 20667	
100	114,3	235	24	190	65	3,6	162	3	22	8	6,520	● 20668	
125	139,7	270	26	220	68	4,0	188	3	26	8	9,070	● 20669	
150	168,3	300	28	250	75	4,5	218	3	26	8	11,800	● 20670	
200	219,1	375	34	320	88	6,3	285	3	30	12	21,150	● 20671	



## Gevindflange N123

Gevindflange, NT 16, DIN 2566C, ISO

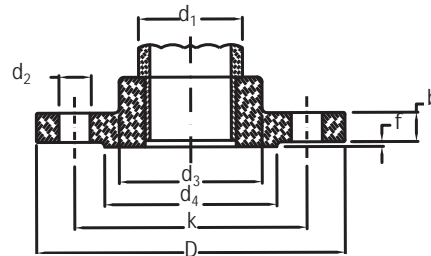
Threaded flange, NT 16, DIN 2566C, ISO

Cert.: EN 10204/3.1

Tils. mm	Dim. mm	D mm	b mm	k mm	$h_1$ mm	$d_3$ mm	$d_4$ mm	f mm	$d_2$ mm	Bolte/Bolts stk/pc	Gevind/ Tread	kg/ stk/pc	EN 1.4571
-------------	------------	---------	---------	---------	-------------	-------------	-------------	---------	-------------	-----------------------	------------------	---------------	-----------

Varenr.  
Article no.

1/2"	21,3	95	14	65	20	35	45	2	14	4	M12	0,613	● 29541
3/4"	26,9	105	16	75	24	45	58	2	14	4	M12	0,910	● 29546
1"	33,7	115	16	85	24	52	68	2	14	4	M12	1,100	● 29545
1 1/4"	42,4	140	16	100	26	60	78	2	18	4	M16	1,600	● 29544
1 1/2"	48,3	150	16	110	26	70	88	3	18	4	M16	1,780	● 29540
2"	60,3	165	18	125	28	85	102	3	18	4	M16	2,430	● 29543
2 1/2"	76,1	185	18	145	32	105	122	3	18	4	M16	3,180	● 29539
3"	88,9	200	20	160	34	118	138	3	18	8	M16	4,120	● 29542



## Blindflange N126

Blindflange, NT 10, DIN 2527

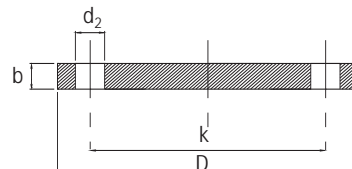
Blind flange, NT 10, DIN 2527

Cert.: EN 10204/3.1

Tils. mm	D mm	b mm	k mm	$d_2$ mm	Bolte/Bolts stk/pc	Kg/ stk/pc	EN 1.4404 AISI 316L
-------------	---------	---------	---------	-------------	-----------------------	---------------	------------------------

Varenr.  
Article no.

200	340	24,0	295	22	8	16,500	● 20490
250	395	26,0	350	22	12	24,000	● 20491
300	445	26,0	400	22	12	30,900	● 20492
350	505	26,0	460	22	16	40,600	▶ 20493
400	565	26,0	515	26	16	49,400	▶ 20494
450	615	28,0	565	26	20	65,000	▶ 20495
500	670	28,0	620	26	20	75,000	▶ 20496

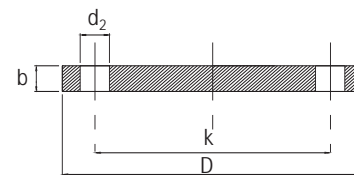


### Blindflange N126

Blindflange, NT 16, DIN 2527 B  
Blind flange, NT 16, DIN 2527 B

Cert.: EN 10204/3.1

Tils. mm	D mm	b mm	k mm	d <sub>2</sub> mm	Bolte/Bolts stk/pc	Kg/ stk/pc	EN1.4404 AISI 316L
							Varenr. Article no.
10	90,0	14,0	60,0	14,0	4	0,63	● 20712
15	95,0	14,0	65,0	14,0	4	0,72	● 20713
20	105,0	16,0	75,0	14,0	4	1,01	● 20714
25	115,0	16,0	85,0	14,0	4	1,23	● 20715
32	140,0	16,0	100,0	18,0	4	1,80	● 20716
40	150,0	16,0	110,0	18,0	4	2,09	● 20717
50	165,0	18,0	125,0	18,0	4	2,88	● 20718
65	185,0	18,0	145,0	18,0	4	3,66	● 20819
80	200,0	20,0	160,0	18,0	8	4,77	● 20820
100	220,0	20,0	180,0	18,0	8	5,65	● 20821
125	250,0	22,0	210,0	18,0	8	8,42	● 20822
150	285,0	22,0	240,0	22,0	8	10,40	● 20823
200	340,0	24,0	295,0	22,0	12	16,10	● 20824
250	405,0	26,0	355,0	26,0	12	24,90	● 20825
300	460,0	28,0	410,0	26,0	12	35,10	▶ 20826

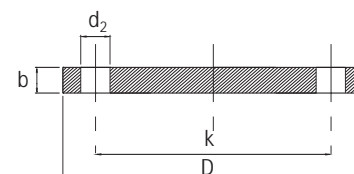


### Blindflange N126

Blindflange, NT 40, DIN 2527 B  
Blind flange, NT 40, DIN 2527 B

Cert.: EN 10204/3.1

Tils. mm	D mm	b mm	k mm	d <sub>2</sub> mm	Bolte/Bolts stk/pc	Kg/ stk/pc	EN 1.4404 AISI 316L
							Varenr. Article no.
10	90,0	16,0	60,0	14,0	4	0,72	▶ 20827
15	95,0	16,0	65,0	14,0	4	0,81	▶ 20828
20	105,0	18,0	75,0	14,0	4	1,24	▶ 20829
25	115,0	18,0	85,0	14,0	4	1,38	● 20830
32	140,0	18,0	100,0	18,0	4	2,03	● 20831
40	150,0	18,0	110,0	18,0	4	2,35	● 20832
50	165,0	20,0	125,0	18,0	4	3,20	● 20833
65	185,0	22,0	145,0	18,0	8	4,29	● 20834
80	200,0	24,0	160,0	18,0	8	5,88	● 20835
100	235,0	24,0	190,0	22,0	8	7,64	● 33276
125	270,0	26,0	220,0	26,0	8	10,80	▶ 20836
150	300,0	28,0	250,0	26,0	8	14,50	▶ 20837
200	375,0	34,0	320,0	30,0	12	27,60	▶ 20838
250	450,0	38,0	385,0	33,0	12	44,50	▶ 20839



## Blindflange N126

Blindflange, 150 LBS, ANSI B16-5

Blind flange, 150 LBS, ANSI B16-5

Cert.: EN 10204/3.1

Tils. mm	D mm	b mm	d <sub>4</sub> mm	k mm	d <sub>2</sub> mm	f mm	Bolte/Bolts stk/pc	EN 1.4404	Varenr. Article no.
1 1/2"	127,0	17,5	73,2	98,6	15,7	1,6	4	EN 1.4404	● 16802
2"	152,4	19,1	91,9	120,7	19,1	1,6	4	EN 1.4404	● 16803
3"	190,5	23,9	127,0	152,4	19,1	1,6	4	EN 1.4404	● 16805
4"	228,6	23,9	157,2	190,5	19,1	1,6	4	EN 1.4404	● 16806

